

THE CONTROVERSY OF LAND REFORM

A CASE OF MPANGISA IN MID-ILLOVO

BY

CABANGILE ETHEL ELIZABETH BENGU

Submitted to the Faculty of Arts in Fulfilment of the requirements for the degree of **MASTER OF ARTS** in the Department of Geography at the University of Zululand (Durban-Umlazi Campus)

Supervisor: Professor E.M. Makhanya

January 1999

DECLARATION

I, Cabangile Ethel Elizabeth Bengu hereby declare that the dissertation, The Controversy of Land Reform: A Case of Mpangisa in Mid-Illovo is the outcome of my research in Mpangisa conducted between the years 1997-1998, and has never been submitted for any other degree. All work done by other persons has been duly acknowledged.

Signed: Sabunye at Umulazi

this 26 day of January 1999.

ACKNOWLEDGEMENTS

First and foremost my humble thanks go to my God. I relied heavily on His Help and Wisdom.

My gratitude and appreciation go to the following persons who all contributed in so many different ways towards the completion of this dissertation:-

Professor E. M. Makhanya, for his supervision, his remarkable guidance and encouragement, his patience, and support he provided throughout the compiling of this work.

Nozipho Mazibuko for her help and support.

The staff of AFRA and that of Land affairs who allowed me to use their resources during research.

Sbu Khumalo for support and encouragement .

Sindy Dlamini and her staff for helping me with the computing.

T. Makhanya who edited and processed and helped in the analysis and manipulation of the assembled data .

Maureen Ntuli for typing.

My family for the support and tolerance.

TABLE OF CONTENTS

	Page
ACKNOWLEDGEMENTS	2
LIST OF TABLES	7
LIST OF ILLUSTRATIONS	10
ABSTRACT	10

CHAPTER ONE

INTRODUCTORY COMMENTS

1.1 INTRODUCTION	12
1.2 BRIEF OVERVIEW OF THE RDP	13
1.2.1 Meeting Basic Needs	13
1.2.2 Developing our human resources.	13
1.2.3 Building the economy.	14
1.2.4 Democratising the State and Society.	14
1.2.5 Implementing the RDP.	14
1.3 LAND REFORM	14
1.3.1 The General Purpose of Land Reform	15
1.3.2 The Need for Land Reform in South Africa	17
1.3.3 The Land Reform Programme of South Africa	18
1.3 SUMMARY	20

CHAPTER TWO

CONCEPTUAL FRAMEWORK OF THE STUDY

2.1	INTRODUCTION	21
2.2	THEORETICAL FRAMEWORK OF THE STUDY	21
2.3	STATEMENT OF THE PROBLEM	23
2.4	HYPOTHESES	24
2.5	AIMS AND OBJECTIVES OF THE STUDY	24
2.6	RESEARCH METHODS	25
	2.6.1 Airphoto Interpretation and Fieldwork	25
	2.6.2 Questionnaire Survey	25
	2.6.3 Participatory Research and Unstructured Interviews	26
2.7	LIMITATIONS OF THE STUDY	27
2.8	SIGNIFICANCE OF THE STUDY	28
2.9	SUMMARY	30

CHAPTER THREE

THE HISTORICAL AND GEOGRAPHICAL ASPECTS OF MPANGISA

3.1	INTRODUCTION	31
3.2	THE SUBTLE WAYS OF LAND DISPOSSESSION BY WHITES IN MPANGISA	31
	3.2.1 The white settlers make friends with the Zulu's in the 1840's	32
	3.2.2 The Arrival of the Smiths in the 1850's	32
	3.2.3 The Smiths' Expand their lands by Cultivating Wattle trees and Sugar cane	33

3.2.4	How Steinbank expanded his Land Boundaries.	33
3.2.5	The White Settlers Continued to Claim More Land	34
3.2.6	Chief Tilongo and the Bhambata Rebellion of 1906	34
3.2.7	Smith Cunningly Claimed More Land	36
3.2.8	In 1948 Zanda Claimed 'Land he acquired in 1910'	37
3.2.9	The Return of Chief Tilongo and Redistribution of Land	37
3.2.10	Continued Land Claims in Mpangisa	38
3.3	RECENT LAND INVASIONS AND DISPOSSESSION	40
3.4	THE ROLE OF SURVEYORS IN THE PLIGHT OF THE RESIDENTS	41
3.5	ECOLOGICAL FEATURES OF MPANGISA	42
3.5.1	Situation	42
3.5.2	Land Use in the Mid-Illovo Area	43
3.5.3	Agricultural Land Use	45
3.5.4	Population	46
3.6	SUMMARY	47

CHAPTER FOUR

ANALYSIS AND INTERPRETATION OF LIVELIHOODS DATA

4.1	INTRODUCTION	48
4.2	CHARACTERISTICS OF THE RESPONDENTS	48
4.2.1	Age and sex structure of the respondents	48
4.2.2	Employment Status of the Respondents	49
4.3	RURAL LAND USE IN MPANGISA	50
4.3.1	Size of land holdings	51

4.3.2	Types of Crops Grown	51
4.3.3	Agricultural Inputs	52
4.3.4	Cultivation Methods	53
4.3.5	Livestock keeping	53
4.4	SOCIO-ECONOMIC CONSTRAINTS	54
4.4.1	Source of Water Supply	54
4.4.2	Energy sources	55
4.4.3	Road Transport	56
4.4.4	Schools	56
4.4.5	Entertainment	57
4.5	ALTERNATIVE LIVELIHOODS	57
4.5.1	Migrant labour	57
4.5.2	Sources of Cash for Local Residents in Mpangisa	57
4.5.3	Development Projects	58
4.5.3.1	Community Vegetable Gardens	59
4.5.3.2	Sewing Project	59
4.5.3.3	Poultry Training Project	60
4.5.3.4	Other Projects	60
4.5.4	Estimated Household Income	61
4.5.5	Household Expenditure	61
4.6	SUMMARY	62

CHAPTER 5**EVALUATION, SUMMARY, RECOMMENDATION AND CONCLUSION**

5.1 INTRODUCTION	64
5.2 EVALUATION	65
5.2.1 Hypothesis one: The people of Mpangisa are landless and poor	65
5.2.2 Hypothesis two: The people of Mpangisa qualify as beneficiaries under the land reform programme	67
5.2.2.1 People of Mpangisa qualify for land restitution	68
5.2.2.2 Mpangisa community qualifies for land redistribution	71
5.2.2.3 Tenure reform is feasible in Mpangisa	72
5.2.3 Land reform can help alleviate landlessness and poverty, and enable the community to achieve a sustainable livelihood	72
5.3 SUMMARY	73
5.4 RECOMMENDATION	76
5.5 CONCLUSION	80
SELECTED BIBLIOGRAPHY	82
APPENDIX A	87

LIST OF TABLES

Table 3.1	People evicted from their farms	41
Table 3.2	Land use in hectares	44
Table 3.3	Land use in percentages	44
Table 4.1	Sex structure of the respondents	49
Table 4.2	Age of respondents	49
Table 4.3	Employment of respondents at Mpangisa	50
Table 4.4	Rural Land Use in Mpangisa	51
Table 4.5	Size of Agricultural Land	51
Table 4.6	Types of crops	52
Table 4.7	Agricultural inputs	52
Table 4.8	People who own Livestock	52
Table 4.9	Source of Water	55
Table 4.10	The source of fuel in Mpangisa	56
Table 4.11	Cash sources of the respondents	58
Table 4.12	Household income of the respondents	61

LIST OF ILLUSTRATIONS

	Between Pages
Fig. 1 Location of Study Area	22-23
Fig. 2 The Study Area	37-38
Fig. 3 Farm Boundaries of the Study Area	39-40
Fig. 4 Land Use Map of the Study Area	42-43
Fig. 5 Land Use Map of Mid-Ilovo in the 1960's -70's	43-44
Fig. 6 Land Use Categories	49-50
Fig. 7 Size of Agricultural land	49-50
Fig. 8 Cash Sources of the Respondents	56-57
EXHIBIT 1. Survey Map of the farm Tyrone no. 2237/1968	39-40
EXHIBIT 2. Survey Map of the farm Shiol no. 7290/1962	39-40
EXHIBIT 3. Survey Map of the farm Dalston no. 13456/1924	39-40
EXHIBIT 4. Survey Map of the anonymous farm SG. No. 1633/1964	39-40

ABSTRACT

The present land distribution in South Africa emanated from a history of land dispossession and racially rooted land legislation. The present state of agriculture is to a large extent influenced by present and past land policies of the Region.

Colonial dispossession of land in Mpangisa began in the 19th century and was still going on undisturbed until recently. The ignorance and poverty of the residents subjected them to this situation. Their mistake was the friendliness and hospitality they had for the strangers that arrived in their land. Their generations are now reaping the fruits of this kindness.

The historical account of Mpangisa, which was collected from oral information, portrays the salient features of this community. Not only does it show how land dispossession was carried out with the backing of official structures such as the courts and the department of surveying, but it also shows how severe the dispossession have been on the deprived community. The historical account gives the subtle facts on how communities were marginalised and impoverished by colonial and Apartheid land and agricultural land policies.

As a result of the history of land dispossession and evictions, Mpangisa reserve is completely surrounded by the commercial farmers with big pieces of land. The situation of Mpangisa in Mid-Illovo makes it an island of misery in the midst of plenty. Its situation was complicated by the racial laws of apartheid which declared separate facilities for the different racial groups. Although Mpangisa is serviced by the Umbumbulu magisterial district, and is administered by the chief of Emfume, the neighbouring farmers and farm tenants were

administered and serviced by the Camperdown Magisterial District. This is part of the problem experienced by the residence in dealing with their problems.

The population of the area has been growing by natural increase as well as by immigration of labour tenants who have been evicted from neighbouring farms. This growth of population has resulted in overpopulation and overstocking processes which are the major cause soil erosion. Lack of land and other resources are associated with faction fighting.

There are no development programmes in Mpangisa. A few socio-economic facilities such as schools, a clinic, and shops cater for the bare needs of the people. Lack of health facilities is related to the high incidence of infant mortality and other poverty related diseases such as tuberculosis. As a small community that is marginal in as far as the terms and conditions of the land reform programme are concerned, the residents of Mpangisa are left to fight their own struggle for the reparation of their land.

CHAPTER ONE

INTRODUCTORY COMMENTS

1.1 INTRODUCTION

This dissertation is about a community that was subjected to much suffering throughout the colonial and apartheid period. It became displaced in the process. When the government of national unity (GNU) took over power in 1994 and introduced the Reconstruction and Development Programme (RDP) as a means of redressing the plight of all the oppressed people of South Africa, it was hoped that disadvantaged communities such as Mpangisa would be obvious beneficiaries of the land reform aspect of the RDP. There has to-date been no mention of the prospect of them benefitting. Before discussing the plight of the residents of Mpangisa it is necessary to give background information on the RDP and its intended benefits and beneficiaries.

1.2 BRIEF OVERVIEW OF THE RDP

The RDP was adopted by the Government of National Unity (GNU) as a means for redressing past injustices and initiating development in South Africa (African National Congress, 1994).

The RDP is an integrated, coherent socio-economic policy framework. It was supposed to be achievable and sustainable, and was expected to meet the objectives of freedom and an improved standard of living and quality of life for all South Africans within a peaceful and

stable society (African National Congress, 1994). It was focused on the people's most immediate needs, and it relies on their energies to drive the process of meeting these needs.

There are five major programmes that are linked together in the RDP, namely :-

1.2.1 Meeting Basic Needs

The priorities of the RDP are jobs, land, housing, water, electricity, telecommunications, transport, a clean and healthy environment, nutrition, health care and social welfare.

1.2.2 Developing our human resources.

This chapter of the RDP deals with education and training, not only in formal schools, but also informally at home, in the workplace, at the public works, through youth programmes and in rural areas. It also deals with training in sports and recreation.

1.2.3 Building the economy.

The RDP is concerned with empowering the disadvantaged to take their place in building the economy. It does not consider developing the economy of South Africa in isolation, but with due regard to developing our neighbouring countries. In building the economy the programme is aimed at linking reconstruction and development, industry, trade and commerce, upgrading infrastructure, labour and worker rights in Southern Africa (African National Congress, 1994).

1.2.4 Democratising the State and Society.

This chapter of the RDP sets out the role of the Constitution and Bill of Rights, of national, provincial, local governments and Non-government Organisations (NGOs), and a democratic information system in facilitating socio-economic development.

1.2.5 Implementing the RDP.

The RDP raises many challenges in its implementation because it involves processes and forms of participation by organisations outside government that are very different from the previous structures. The RDP can be implemented only if it is people-centred, and if the planning and co-ordinating process allows the active involvement of democratic structures (African National Congress, 1994).

The finance of for the RDP is supposed to come from revenues, issuing debt and grants. The largest portion of all RDP funding is expected to come from better use of existing resources (African National Congress, 1994). It is, however, clear that government policy and mechanisms of raising finance are crucial to the success of the RDP.

1.3 LAND REFORM

Section 2.4 of the RDP deals with land reform which is described as the most basic need for rural dwellers (African National Congress, 1994). It is necessary to briefly explain land reform as a means of redress and how it was viewed globally as well as locally.

1.3.1 The General Purpose of Land Reform

Land plays a significant role in human lives. It is a finite resource upon which we are all dependent for food, shelter, clothing and the spiritual well-being of family, community and nation. Ideally, all human beings should have access to land in order to satisfy their basic needs of food, shelter and clothing. The realisation of the importance of land as a means of production is as old as mankind. In early Israelite society the land played a very significant role. The society was almost entirely dependent on agriculture for their well-being. When the monarchy system was introduced the kings and landlords confiscated the land of the common citizens to enrich themselves (Kings 21 :1-29). This resulted in marked gaps in level of living between the landed landlords and the landless commoners.

When such imbalances occur in any society as a result of the inequitable distribution of land, there is a need for redress. Land reform is a means by which this redress can be achieved. In a narrow sense land reform means the distribution of surplus land accrued as a result of the implementation of ceilings on agricultural holdings. In a broad sense it implies not only distribution of surplus land but also the improvement of the conditions of tenancy, agricultural credit, cooperative organisation, agricultural education, marketing and advisory services (Pask & Williams, 1993; Yugandhar, 1996). Basically, land reform means a change of land ownership, whereby the landless are given the opportunity to own land. It may also involve land redistribution or land reparation. These processes have been carried out in many countries throughout the world.

The Land reform carried out in China under Mao Tse-Tung in the 1950's was intended to redistribute land (owned by large landowners and rich peasants) among the rural population, and to get the land farmed communally by setting up producer's co-operatives (Dumont, 1957). Agrarian reforms were also carried out in Spain and Italy during the 1940's where very large landholdings (*latifundia*) existed side by side the very small landholdings (*minifundia*). In Spain this involved the purchase of a number of *latifundia* by the state and redistributing them among the landless peasants (Dumont, 1957). The process of redistributing *latifundia* among the peasants was also carried out in Brazil, Venezuela and Portugal. The methods of doing this varied from expropriation in Portugal to compensation of the landowners in Spain. Land reforms are usually related to change of government, as in the case of the taking over of power by Mao Tse-tung in China or the overthrow of the Salazar Government in Portugal.

African countries such as Tanzania, Kenya, Mozambique, Zambia, and Zimbabwe also introduced land reforms when they became independent. In Kenya the 'White Highlands' were redistributed among the Black Kenyans, in Tanzania land reform was part of a social revolution involving the process of villagization of rural land. The land reform in Zimbabwe was initially carried out on a principle of willing buyer and willing seller, whereby the large farm owners (mainly white) were induced to sell their land or portions of it to willing Black Zimbabweans. The latter principle was adopted initially in South Africa with a slight variation, namely, that the government offered to financially assist the willing buyers. Somehow the South African government had learnt from the Zimbabwe experience that the system of willing buyer and willing seller did not produce results, because of the general lack of finance among the Black people.

When countries implement land reform, there are usually communities that are not fully covered by the principles and laws regarding the reform measures. These communities may remain victims of past and present injustices unless special provisions were made to benefit them. In the case of Kenya the main thrust of the land reform was targeted at people who were dispossessed of their land during the colonial period. The Majaoni community had settled in the Mombasa area around 1910. In 1923 the British colonial office gave the land belonging to the Majaoni community to a former British Army soldier as a gift for his part in the First World War. This made about 50 Majoani families squatters on their own land, now owned by the former British soldier. At independence (1960) the new Kenyan government instituted land reform throughout the country. Unknowingly, The new government acquired the Majaoni land from the British soldier. Since 1963 the Majaoni put up a struggle to have the land transferred to them. This was in vain, simply because they did not fall within certain categories of land beneficiaries.

1.3.2 The Need for Land Reform in South Africa

The present land distribution in South Africa emanated from a history of land dispossession and racially rooted land legislation (Makhanya, 1994). The present state of agriculture is to a large extent influenced by present and past land policies of the Region. During the colonial period the Natal Nguni were continually dispossessed of their land (Welsh, 1971, Bundy, 1979). Subsequent to this act of dispossession, and beginning with the Locations Commission of 1846, there was a series of colonial land policies that resulted in the spatial confinement of the Nguni. After the formation of the Union of South Africa in 1910 the territorial segregation of the rural areas of KwaZulu/Natal along racial lines was given a

legal stamp by the 1913 and 1936 Land Acts. It is inevitable to refer to this racial territorial segregation as it still has a marked effect on agricultural land use in the region.

It is noted, for instance, that whereas the White farmers in KwaZulu/Natal are engaged in a variety of agricultural activities at a commercial level, and that whereas the historically Natal and KwaZulu territories have one and the same ecological conditions, agriculture in historical KwaZulu territory is at a subsistence level and is characterized by overpopulation, soil erosion, low productivity, and general poverty. This disparity is largely associated with the differences in the size of the landholdings on which farming takes place (Makhanya, 1994). In the rural sector there is a conspicuous dichotomy between land rich commercialised farmers and landless subsistence peasants. The lands inhabited by the latter are characterised by overpopulation, overgrazing and soil erosion. There is widespread unemployment and poverty among the peasants.

1.3.4 The Land Reform Programme of South Africa

With the establishment of the new Government of National Unity in 1994, the remaining racial laws were repealed. A land reform programme was established as part of the Reconstruction and Development Programme (African National Congress, 1994). The land reform programme in South Africa was inspired by the need to redress past injustices in the distribution and use of the land resources.

The Land Reform Research Programme was started in 1994 (African National Congress, 1994). Since then there is ongoing debate on the strategies for land reform. The approved

land reform programme is based on restitution, redistribution and tenure reform. The declared objective of the land reform programme is to redress the inequities in land distribution in order to promote sustainable rural development. Land restitution is aimed at restoring land to people who were dispossessed by discriminatory legislation since 1913. The purpose of land redistribution is to empower the poor and landless to gain access to land, while tenure reform intends to ensure security of tenure for all.

Land for redistribution is acquired either from state owned land or from willing sellers. The Government provides a subsidy of R15 000, through the Department of Land Affairs and Agriculture, to every eligible land beneficiary. The inclusion of the property clause in the constitution, which guarantees that no one may be deprived of his/her property, however, militates against the objectives of the land reform programme (Republic of South Africa, 1996). The rate of land redistribution is further slowed down by administrative hurdles and the small amount of subsidy. The subsidy of R15 000 granted to land beneficiaries is insufficient to acquire land larger than two hectares. This implies that many of the land beneficiaries can at best produce for subsistence, given the present state of agriculture in South Africa (Makhanya, 1998). Consequently, there has to date not been a significant change in the distribution characteristics of rural land in South Africa.

Subsidies *per se* do not necessarily provide sustainable livelihoods. This has been demonstrated in the case of the land reform programme of South Africa where government financial constraints have hampered the implementation of the land reform programme. Instead of an increase in the amount of subsidy given to individual beneficiaries to enable them to acquire viable land units, the 1997/98 budget allocated to the Department of Land

Affairs and agriculture was reduced (Samson, 1997). This further reduces the prospects of fulfilling the objectives of alleviating rural poverty.

1.3 SUMMARY

It has been pointed out in this chapter that the present land distribution in South Africa emanated from a history of land dispossession and racially rooted land legislation. It was also stated that the present state of agriculture is to a large extent influenced by colonial and apartheid land policies.

When the government of national unity (GNU) took over power in 1994 and introduced the Reconstruction and Development Programme (RDP) as a means of redressing the plight of all the oppressed people of South Africa, it was hoped that disadvantaged communities such as Mpangisa would be obvious beneficiaries of the land reform aspect of the RDP.

Chapter two gives the conceptual framework of the study; Chapter three the salient historical and ecological features of Mpangisa; Chapter four is the analysis of the research data from the questionnaire and Chapter five is the evaluation of the results.

CHAPTER TWO

CONCEPTUAL FRAMEWORK OF THE STUDY

2.1 INTRODUCTION

Since the land reform programme was adopted by the government of national unity (GNU) of South Africa in 1994, there has been a number of disputes arising from its implementation. The disputes arise from historical, political, socio-economic and ecological considerations. This dissertation examines the contentions of the land reform programme with regard to the community of Mpangisa in Mid-Illovo.

2.2 THEORETICAL FRAMEWORK OF THE STUDY

Colonial and Apartheid policies in South Africa pushed millions of indigenous rural dwellers into overcrowded and impoverished reserves, homelands and townships. These policies were legalised by the Natives Land Acts of 1913 and the Native Trust and Land Act of 1936. In addition capital intensive agricultural policies led to large scale eviction of farm dwellers from their land and homes.

These Colonial and Apartheid policies also created a dual system of land tenure in South Africa. Whereas the commercial farmers have freehold land tenure, the tribal areas or reserves have a tribal or communal system of land tenure. In the communal land-tenure system land is held by a group, and is controlled and allocated by a hierarchy of tribal

leaders. In principle a married homestead head is entitled to a residential site, an arable field for each wife, a right to common pastures, and rights to the use of various common resources such as water, fuels, building material and so on. Rights to use land, under the communal system, cannot legally be bought and sold nor leased or hired (Cross and Harries 1992).

In 1991 the Natives Land Acts of 1913 and 1936 were scrapped (Republic of South Africa, 1991), thus paving a way of the restructuring of rural land use in South Africa. With the establishment of the new Government of National Unity in 1994, the remaining racial laws were repealed. The land reform programme was established as part of the Reconstruction and Development Programme (ANC, 1994). It was inspired by the need to redress past injustices in the distribution and use of the land resources. The approved land reform programme is based on restitution, redistribution and tenure reform.

People in tribal areas have different interests in land, and make different claims to rights in land. They often want land for a plurality of reasons. A piece of land can be needed for the cultivation of crops, livestock grazing or as a source of security or a stake in the community (Francis and Williams, 1992). The demand for residential land is intimately tied up with tenure security (Marcus *et al*, 1996). A special provision of the Land Reform Programmes is to target women. Land tenure and matrimonial laws are being revised appropriately to accommodate those who had been disadvantaged.

The land reform policy emphasises local participation in decision making, gender equality and environmental sustainability (Hanekom, 1997).

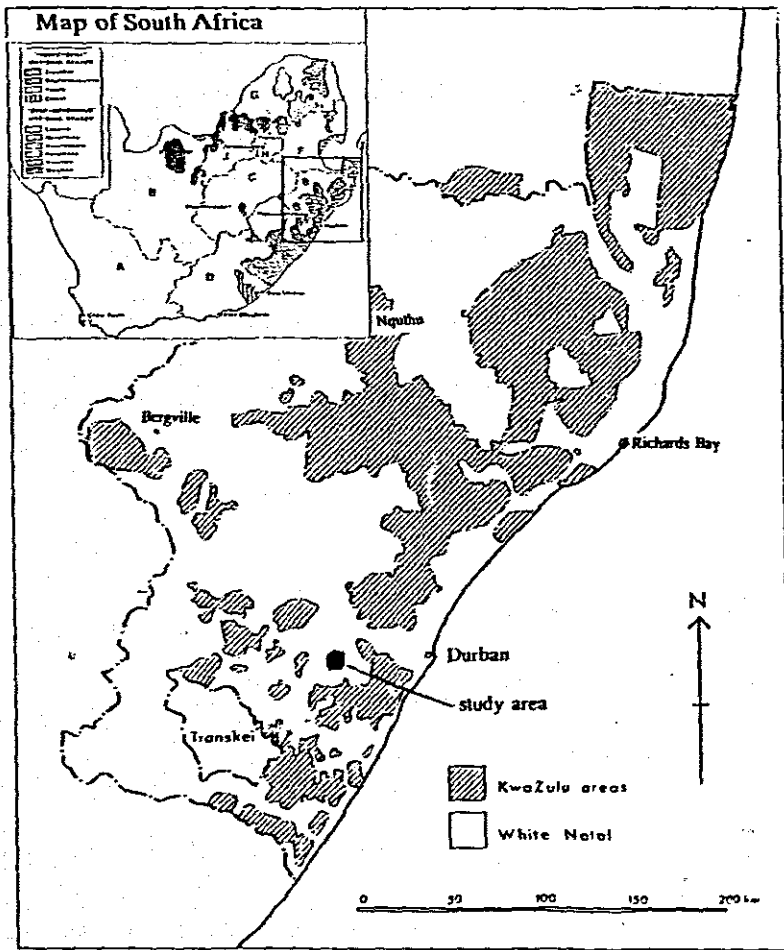


Fig. 1 Location of study area

2.3 STATEMENT OF THE PROBLEM

Mpangisa is a subsistence rural reserve that is completely surrounded by commercial farmers in Mid-Illovo. It is situated in the Natal Midlands partly in the magisterial districts of Umbumbulu and partly in Richmond. Mpangisa is one of the rural settlements that was affected by the Land Act of 1913. Many of its inhabitants were settled in it after being dispossessed of their land by government action prior to the Land Act. Their land was given to the adjacent commercial farmers.

Mpangisa falls under the jurisdiction of a chief whose regional tribal court is at Esimamahleni in Emfume. He seldom comes to this area, but is in indirect control through a headman.

Many people in the community are landless, unemployed, poor and illiterate. They depend largely on migrant labour remittances. Most of the land in Mpangisa is used for subsistence farming. The common crop grown is maize. It is planted in summer and is rain fed. Other crops commonly grown in Mpangisa are sweet potatoes, potatoes and sorghum. Almost every home has cattle and goats.

The population of the area has been growing by natural increase as well as by immigration of labour tenants who have been evicted from neighbouring farms. This growth of population has resulted in overpopulation and overstocking processes which are the major cause of soil erosion. Lack of land and other resources is associated with faction fighting. In the 1980s more than 500 males of the area were killed in faction fighting. A few women

were also killed.

There are no development programmes in Mpangisa. A few socio-economic facilities such as schools, a clinic, and shops cater for the bare needs of the people. Lack of health facilities is related to the high incidence of infant mortality and other poverty related diseases such as tuberculosis.

Whereas the people of Mpangisa apparently qualify as beneficiaries of the land reform programme, there is no discussion of this possibility.

2.4 HYPOTHESES

This dissertation is based upon the following hypotheses:

1. The People of Mpangisa are landless and poor.
2. They qualify as beneficiaries under the land reform programme.
3. Land reform can help alleviate landlessness and poverty, and enable the community to achieve a sustainable livelihood.

2.5 AIMS AND OBJECTIVES OF THE STUDY

The aim of this dissertation was to examine the origin of this reserve in order to determine the eligibility of its residents as beneficiaries of land reform. The study further aims at

analysing the nature of livelihoods currently sustaining the community. The objective is to advise government officials about the plight of the community with the hope that appropriate measures will be taken to assist them.

2.6 RESEARCH METHODS

Research for this study was carried out by a variety of methods, including the following :

2.6.1 Airphoto Interpretation and Fieldwork

Airphoto interpretation using a mirror stereoscope was used to draw maps of Mpangisa. Sequential aerial photographs of 1960 and 1976 were used to study the spatial changes in land use and settlements in the study area. Both sets of photographs were at the scale 1:30000. Field work was undertaken to get ground truth of the features on maps and aerial photographs. The maps Fig. 2 to Fig. 5 were produced in this way.

2.6.2 Questionnaire Survey

A questionnaire survey was used to collect socio-economic data. For this purpose a random selection of about 60 respondents was made. The questionnaire was complemented by informal interviews with community leaders, church leaders, women's groups, youth groups, teachers and government officials.

2.6.3 Participatory Research and Unstructured Interviews

A period of about three weeks was spent in the area for participatory action research in order to get an indepth understanding of the problems and aspirations of the community.

Random selection of Mpangisa homes were visited and most of the respondent were very willing to discuss the plight of their suffering in the area. Having been born and bred in this area made it easier to obtain genuine response. The residents who had never seen the researcher before had only to be referred to the name of my father after whom the only High school in the area was named.

During participatory research interviews were held with the key figures on the land issue of Mpangisa in an attempt to give a balanced view of what has brought Mpangisa area into its present state of the landless, unemployment and poverty.

Although participatory research was done in the area itself, some of the respondents had to be traced away from the area. The son of the chief had to be found in Saiko at Umkhomazi where he has offices. His Uncle Julius has a house at KwaMakhutha Township where he was interviewed. A daughter of Mbanjwa was followed to Gulube where they have moved to for fear of the faction fights. Mrs Lembede and Mr Lembede who are self appointed representatives of this area were found in the Department of Agriculture offices. Mr Ntombela a government official in the department of Land Affairs at Umbumbulu and Mr H D Mkhize from the Department of Agriculture were interviewed at the Umbumbulu Government offices.

Kweyama, who was born and bred in Mpangisa, and who is an oldest living member in the

Mpangisa area and a survivor of the agony of evictions and dispossession that took place in the beginning of this century provided valuable information about events of the 19th century which had become folklore among the indigenous community throughout the ages. Though not written down, the history is well known by all the rural people of Mpangisa. He knows the history and got some from his parents. Some of this history came from Michael Mchunu of Ismont as told by (my blind brother) and it coincides with that of Kweyama. A lot of information had also been provided by a retired teacher Julius Mkhize (a grandson of Chief Tilongo).

Julius Mkhize had some written information and bits and pieces of topographical maps. He had been part of some legal proceedings where the government surveyors were called to the area to witness a claim that the piece of land in question belonged to the white farmers who had put pegs by night as proof of ownership.

2.7 LIMITATIONS OF THE STUDY

Unfortunately the owners of the neighbouring farms could not be interviewed for fear of the killings of the farmers that were going on. They feared that the researcher might be part of the people who spied on them and then later attacked them. This study had been conducted at a wrong era when farmers viewed any strangers with suspicion, they associated such people with the killers of the farmers.

What was frightening with this research was that it was raising hopes of the people. A number of researchers from both the government offices and NGO's coming had promised

to improve their living conditions.

2.8 SIGNIFICANCE OF THE STUDY

The native reserves throughout South Africa were not considered as far as development planning was concerned (Nattrass, 1981). This neglect contributed to poor land management in the subsistence agricultural areas. As a result of the growth of the rural population which was prevented from migrating to the urban areas by the influx control legislation, the land in the native reserves has become degraded and overpopulated by poverty stricken rural residents (Lund and Wakelin, 1993). At their present state these areas cannot be sustained much longer. On the other hand the commercial farms have been inefficiently managed, depending largely on government subsidies (Nattrass, 1981; Corbett, *et al*, 1994), without which production levels in them are inclined to fall.

The land reform programme is intended to redress the skewed rural land distribution. Since its implementation in 1994 a number of communities and individual households have benefitted from the programme. Land for redistribution is acquired either from state owned land or from willing sellers. The Government provides a subsidy of R15000 to every eligible land beneficiary. Reports by the Department of Land Affairs indicate that "vast tracts" of formerly white-owned land have to date been transferred to some 1500 formerly landless families in KwaZulu/Natal.

There has, however, to date not been a significant change in the distribution characteristics of rural land in KwaZulu-Natal (Makhanya, 1994). The rate of land redistribution is slow due

to administrative hurdles and the small amount of subsidy. There are still many landless rural households.

The subsidy of R15000 granted to land beneficiaries is insufficient to acquire land larger than two hectares. This implies that many of the land beneficiaries can at best produce for subsistence, given the present state of agriculture in South Africa. In other words the land reform is encouraging smallholder production. The idea that smallholder agriculture is efficient is widely accepted (Van Rooyen *et al*, 1987; Weiner & Levin, 1991; Brand *et al*, 1992; Bromberger & Antonie, 1993; Lipton 1993). Other findings were more wary about this assertion (Weiner, *et al*, 1985; Lenta & Maasdorp, 1988; Levin & Weiner, 1994).

Smallholder agricultural systems are often linked to part-time farming (de Klerk & van der Brink, 1993; World Bank, 1993; Makhanya, 1997). Earlier literature on Black agriculture in South Africa was inclined to criticize the system of migrant labour as unproductive in that it robbed the rural areas of able-bodied agricultural labour (Makhanya, 1979). Recent researchers, however, argue that the system of part-time farming is efficient (de Klerk & van der Brink, 1993; World Bank, 1993). Part-time farming implies that the farmer engages in some form of off-farm income generating activities. Many of the researchers found this to be a widespread phenomenon in South Africa (May, 1987; Lyne, 1989; Levin & Weiner, 1994).

There were a few writers who believed that, for any viable or sustainable development to take place, there was need for a drastic restructuring of Black agriculture in South Africa (Nattrass, 1981; Davenport, 1990; Nattrass & Nattrass, 1990).

A few case studies have been done on both land reform and community development (Greyling, 1969; Hornby, 1997). Hornby recently examined the implementation of land reform in Escourt, where she did an intensive study of the preparation of the community for land restitution and land redistribution (Hornby, 1997). No such study has been undertaken at Mpangisa. This study will fill this gap and thereby contribute to the understanding of the plight of this rural community. The results from this study may inform the government of the possible defects in the processing of the land reform programme.

2.9 SUMMARY

Finally it may be stated that Mpangisa is one of the rural settlements that was affected by the Land Act of 1913. Whereas the people of Mpangisa apparently qualify as beneficiaries of the land reform programme, there is no discussion of this possibility. Many of its inhabitants were settled in it after being dispossessed of their land by government action prior to the Land Act. Their land was given to the adjacent commercial farmers. What is complicating the eligibility of Mpangisa resident for restitution is that Mpangisa falls under the jurisdiction of a chief whose regional tribal court is at Esimamahleni in Emfume who seldom comes to this area, but is in indirect control through a headman.

As many people in the community are landless, unemployed, poor and illiterate and were depending largely on migrant labour remittances, they deserve to have their plight addressed by the land reform programme.

CHAPTER THREE

THE HISTORICAL AND GEOGRAPHICAL ASPECTS OF MPANGISA

3.1 INTRODUCTION

The Native 'reserve' known as Mpangisa was originally surveyed in 1895 with an area of 1442 acres. In the old map it appears as Tilonko (the correct word is Tilongo) where it looks like one farm that belonged to some farmer.

In Chapter Three the history and geography of Mpangisa is given in order to portray the salient features of this community. The historical account was collected from a few elders in the community. It is oral history which was obtained by participatory method, in which the researcher spent time living with the community.

3.2 THE SUBTLE WAYS OF LAND DISPOSSESSION BY WHITES IN MPANGISA

Colonial dispossession of land in Mpangisa began in the 19th century and was still going on undisturbed until recently. The ignorance and poverty of the residents subjected them to this situation. Their mistake was the friendliness and hospitality they had for the strangers that arrived in their land. Their generations are now reaping the fruits of this kindness.

The chief of Mpangisa during the colonial period was Chief Tilongo. He suffered much during the early dispossession of his land by the colonists who were backed by the newly

formed colonial government based in Pietermaritzburg (Mkhize, 1998). The family of the researcher has been part of this ongoing dispossession.

3.2.1 White Settlers make friends with the Zulus in the 1840's

Round about the 1840's a few British colonists based at Malvern and Bellair in the South Coast of Natal made friends with indigenous Zulus who were ruled by Singele Mkhize whose area comprised of Bluff, Queensburg, Hillcrest, Pinetown, Camperdown, Helahela in Richmond, Nhlazuka, Umkhomazi down to the Sea (Mkhize, J., 1998).

Among the colonists that made friends with Zulus was Steinbank who lived in Malvern with the people that were ruled by Ngunezi, the son of Singele. At the time the colonists were under the British Empire. Later Steinbank joined Aukley who had already arrived in Mid-Illovo.

3.2.2 The Arrival of the Smiths in the 1850's

Round about 1850's V.T. Smith made his appearance. The people who lived in this area were using a lot of wood for energy and opening up land for farming. Like all the other colonists, Smith moved about among the Zulu Kraals in this area, he spoke to them noting down all that they said. He slept in their kraals. When his clothes became really dirty the Zulus washed them and he wore ibheshu (traditional Zulu wear) while waiting for his clothes to dry up.

3.2.3 The Smiths' Expand their lands by Cultivating Wattle trees and Sugar cane

V.T. Smith had initially asked for a small plot of land to build his house from the chief. He later requested permission to grow wattle trees to replace the shrinking indigenous forest. The chief allowed him to do this. He started off in Ntimbankulu coming down to Egcebeni using Gayimbila (a gorge with a very steep ravine) as his border. While V.T. Smith was busy growing the wattle forest C.G. Smith, who had also asked for a small plot of land to build his house, started growing sugarcane in the lower Illovo. This way the Smiths managed to fraudulently acquire land which they used for growing large forests and sugar plantations (Mkhize, 1998).

3.2.4 How Steinbank expanded his Land Boundaries.

Steinbank had further asked for a land to keep his cattle which he was selling to the Zulus. In his conversations with the Zulus Steinbank gave the impression that he was more interested in the names of the rivers and the mountains and yet he was deceitfully using these to mark the borders of the land that he was going to claim and submit to the land surveyors as his own (Mkhize, 1998). To acquire more land Steinbank married four Zulu women, this qualified him to get more land as Umkhwenyana (Son-in-law). Later Queen Victoria passed a law which forced white men to marry white girls even though they had already married the black girls. The law stated that any white man that was married to a black woman would be considered by the law as single (Mkhize, 1998). At this time Steinbank had two sons by two of his Black wives. He married a white woman who gave birth to a daughter. This daughter became heir to Steinbank's estate on the ground that his sons were not entitled to

his property because they were born out of marriages that were not recognised by English Laws (Mkhize, 1998).

3.2.5 The White Settlers Continued to Claim More Land

Janie was one of the few white settlers who also made himself a permanent resident in the area of Steinbank. Janie stayed at Mpangisa where he continued with his inquiring visits, and became a close friend of one of the Zulus by the name of Pitane Mkhize. Janie used his newfound friend to get more land from the chief. Janie had acquired his own land, and he needed more land for his sons, Joe and Mathikane. He acquired land for Joe, and that land, which is now acquired by Hampson his sons and grandsons (Mkhize, 1998). Over and above Joe himself extended his fences steadily gradually taking much of the land that belonged to the people of Mpangisa. Even at the present moment under the new political dispensation in the New South Africa, these white farmers continue to increase their farms at the expense of the poor residents of Mpangisa.

A few years ago Runnymede farm was more or less four kilometres away from the hill known as Enkwadini, but now the boundaries of Runnymede Farm have been extensively extended. The ownership of this farm is shared by Ernest, Ingrid and a grandson of Joe McCulough (Mkhize, 1998).

3.2.6 Chief Tilongo and the Bhambata Rebellion of 1906

While the white people were busy acquiring land in the manner described above, there was

disruption between the sons of chief Ngunezi, Skhukhukhu and Tilongo. Fighting erupted when Ngunezi married Mamswazi from Swaziland who would mother the future chief. Mamgishwa, the mother of Skhukhukhu could not accept this. She managed to persuade the community into looking to Skhukhukhu as the future chief (Mkhize, 1998). To sought out the problem between the sons of the chief, Tilongo was moved to settle at Mpangisa while Skhukhukhu remained in the area around Ngilanyoni. During this time, news had reached all corners of Natal that Bhambatha KaManciza had killed all the whites that had settled in his land in the Natal Midlands.

At this time Bhambatha was leading the war against the introduction of Poll Tax (the 1906 Bhambatha Rebellion). Warriors arrived at Mpangisa from Umbumbulu to get instructions from the chief about participation in this war. On their arrival they found that chief Tilongo with his headmen had gone to the Government offices in Pietermaritzburg where he attended a meeting. On their way back they passed a tobacco field at Mgwahumbe which belonged to a white farmer. The farmer was not at home. Only his wife and her helper were left behind (Mkhize, 1998).

In their anger the warriors used sticks to destroy the tobacco crop. The maid alerted the farmer's wife, and they ran towards a nearby farm. When chief Tilongo came back from the meeting he was told that Mounted police had come looking for him, so he had to run away from his kraal and spent the night with his half brother Mqolombeni (Mkhize, 1998). The following day he and his headmen went to Pietermaritzburg and reported to the court. A case had been opened against him concerning the incident.

In court it was alleged that the chief's warriors intended to kill the farmer. Chief Tilongo was charged with malicious damage to property (tobacco), and with the intention to kill the white farmer. The chief was represented by Mandiza who lived in Rosebank. The chief tried to convince authorities that his warriors did not try to kill anybody, and that though they saw the women running away, they did not do any harm to them.

The chief was also charged with sending his men to Chief DiniZulu. According to the court authorities, this was proof that Tilongo was communicating with the rest of the Zulu chiefs, which thing the British Government had declared unlawful. Chief Tilongo was found guilty and sentenced to ten years in prison. His headmen refused to go without him, and they were also sentenced along with him. The chief was eventually exiled to Swayimane with his family. His land was divided by the white farmers among his three brothers Bubula, Bhibhinanda and Bamakhali. Bubula was left in charge of the area from Ntimbankulu down to Mpangisa.

3.2.7 Smith Cunningly Claims More Land

At that time V.T. Smith (owner of the wattle forest) persuaded Bubula to move from his kraal in Ntimbankulu to Billiya. The reason for this being that he needed to be closer to his people. As soon as Bubula moved, V.T. Smith claimed ownership of the vacated land and evicted all the remaining tribesmen. He replaced them immediately by planting a Wattle forest at Ntimbankulu (Mkhize, 1998).

3.2.8 In 1948 Zanda Claimed 'Land he acquired in 1910'

In 1948 during the rule of Nkasa, the grandson of chief Tilongo, there was a peacock farm belonging to one white farmer. Another white man called Zanda worked in this peacock farm. When his master returned to Durban, Zanda acquired the peacock farm. Zanda later claimed land at Ngqokamisa, which is a part of Mpangisa. The community, lead by Luseni, Mbanjwa and Sifikili Muthwa reported the incident to the Government Officers, and laid a charge. Zanda claimed that he had acquired the land from Chief Tilongo in 1910.

The case was brought to the courts. Maps issued by the land surveying officers favoured Zanda. Nkasa had just taken over from his father and according to the law he was not yet an accepted Chief. The court ruled in favour of Zanda claiming that it was, after all, only a small piece of land.

It was, however, obvious that Zanda could not have acquired the land because in 1910 the farm belonged to his master. At that time he was merely an employee of the peacock farmer. Secondly, the chief responsible for the allocation of land was not there.

3.2.9 The Return of Chief Tilongo and Redistribution of Land

On Tilongo's return the land that had been under Bubula and Bhibhinanda was returned to him. They gladly returned it, but Mlulama who was in possession of Mophela, Camperdown, Njobokazi and Hillcrest areas kept his land which has since passed down to his generation up to this date.

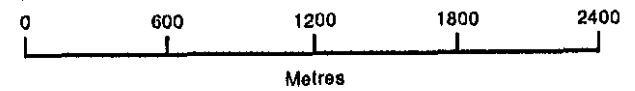
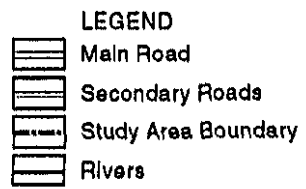
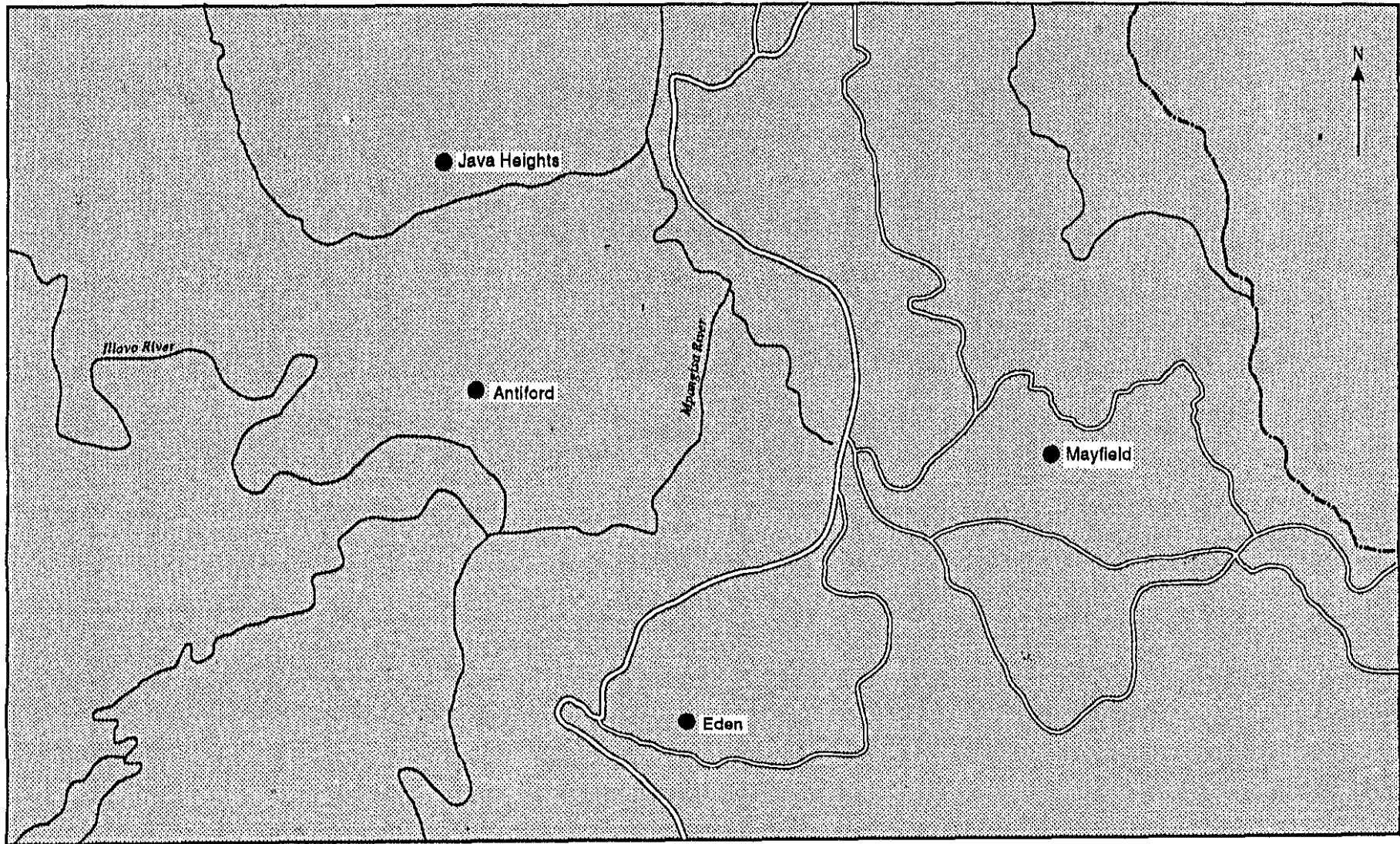


Figure 2 : The Study Area

The government created a buffer zone between Mqolombeni and Tilongo by using a piece of land at Mbuthweni that did not have kraals. The government then placed a single soldier called Tommy Hackland in charge of this land. The land has since been returned to the community of Mbuthweni under chief Moyeni Mkhize.

Another buffer zone was created at Ismont where another single soldier was placed by the Government to prevent fighting between the sons of Ngunezi. The Community there continues in vain to negotiate for the return of this land.

3.2.10 Continued Land Claims in Mpangisa

Some white farmers continue to claim land in Mpangisa. In 1970 one such farmer suddenly claimed land that belonged to the community of Mpangisa and laid a foundation for his house. The community resisted this claim. They took up picks and shovels and tore down his homestead foundation each time he tried to lay it.

The government's land surveyors were brought in and, as usual, they were referred to certain spots where it was claimed there were trigonometrical beacons marking the white farmer's land boundaries. Some cement marks were found. When these land marks were joined, his fence ran over the black people's lands dividing them into two parts. Those falling into his farm he claimed as his own land. Later it was discovered that the white farmer had used one of his labourers known as Mhlengwa Shange to mark off these boundaries. He had been seen on several occasions coming down from these areas (Mkhize, 1998).

Other white farmers issued out maps that they claimed had been drawn when the chief gave them the land. When their case was tried in Pietermaritzburg land court, headman Sifikile Mutwa explained that the period in which the farmers claimed to have acquired the land from the chief coincided with the period when the chief was in exile. Furthermore, at that time there was no communication between himself and the chief. The court ruled out that Nkasa, the son of Tilongo, who had just taken over after his father's death could not be a witness in this case because he was not yet sworn in as the chief. The court ruled out in favour of Zanda and other white farmers contending that all the disputed land was only a small piece of land (Mkhize, 1998).

The people that Zanda had fenced in, automatically became tenants in his farm, he did not evict them. When Zanda died, his sons vanished without a trace. Instead of the land being returned to the dispossessed community or to the chief's trust, V.T. Smith, the Wattle forest planter, grabbed the land and planted more Wattle. He then evicted the tenants and told them to leave his land. In all these activities the chief was never consulted. These people had to move to the already crowded eastern banks of Mpangisa River which is rugged, barren, stony (Mkhize, 1998).

The western part of Mpangisa forms a border with Mbuthweni. A certain Campbell requested Chief Tilongo to grant him temporary use of this land for grazing his cattle. When Campbell left the land was given to C H Evans who used it for mixed farming (Mkhize, 1998). At present this land is under the Ingonyama Land Trust and is hired out to some able black farmers who are not from the area. It is known as Drommore farm.

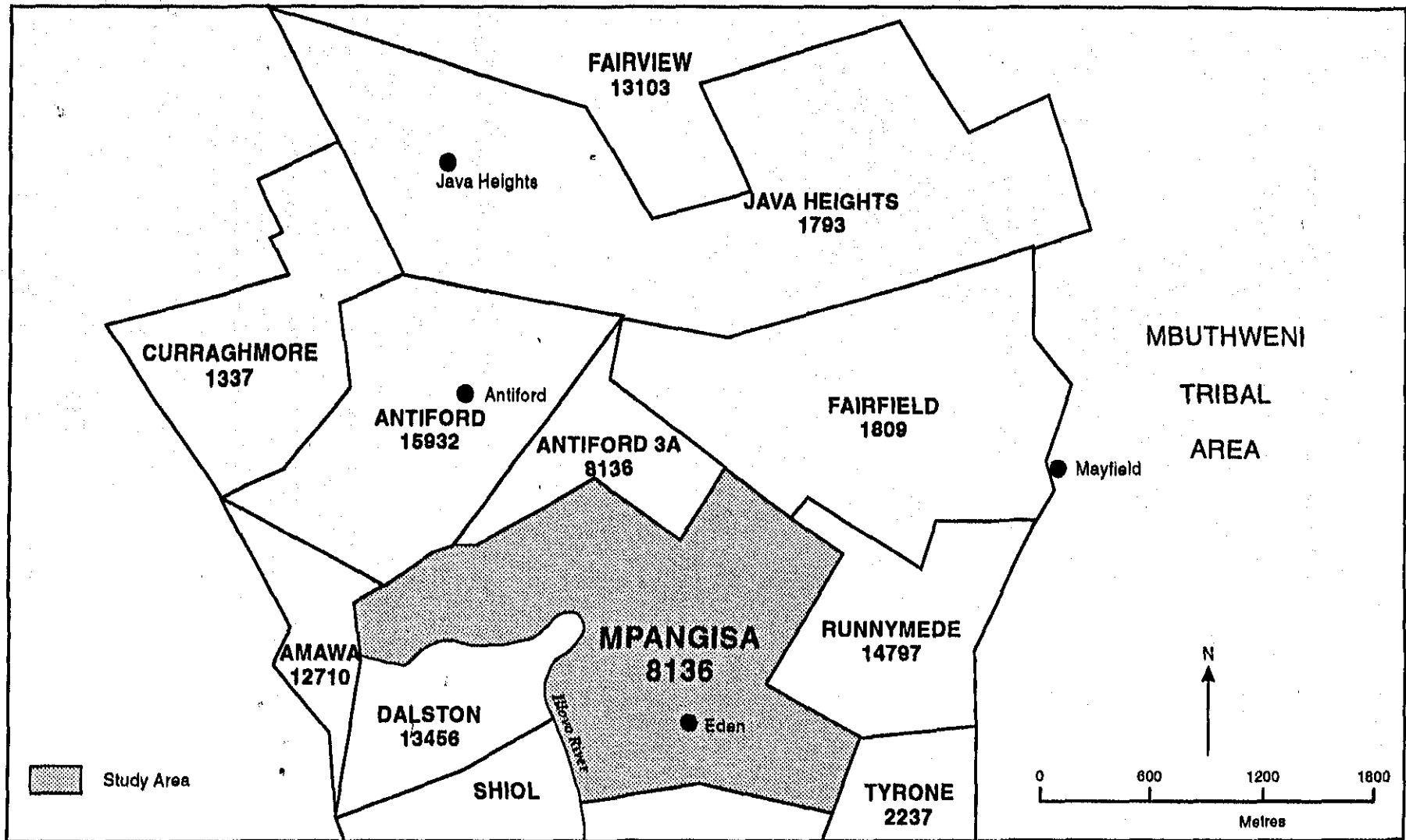
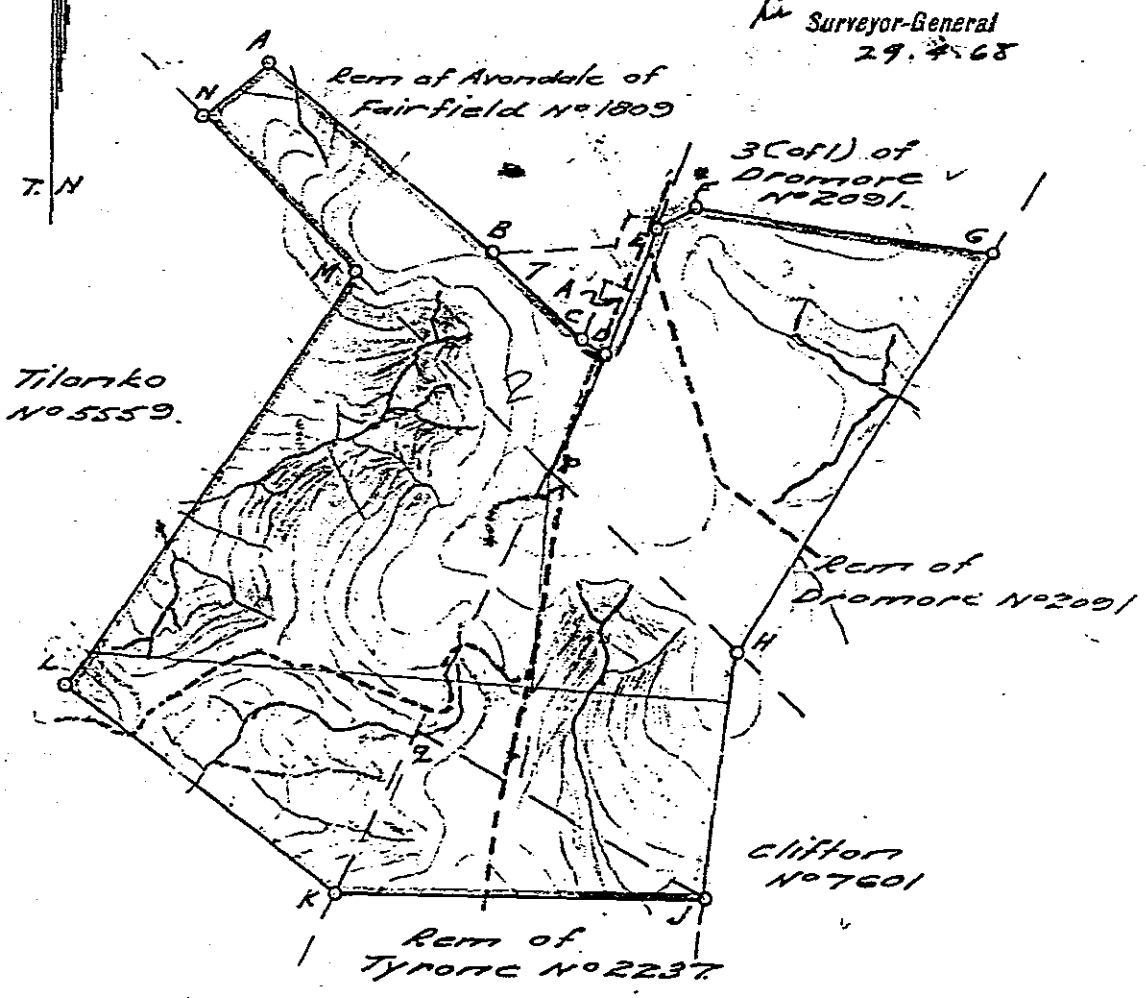


Figure 3 : Farm boundaries of the Study Area.

EXHIBIT 1. TYRONE NO. 2237/1968

Shollay

Surveyor-General
29. 4. 68



Scale 1: 18000.

Descriptions of Beacons

- A.C.D.E.F.N. 3/4" round iron peg under cairn.
- B. 3/4" round iron peg.
- G. 3/4" round iron peg in concrete
- H. 3/4" round iron peg under cairn with W.M.S.
- J. 3/4" pipe under cairn.
- K. 3/4" pipe under cairn with W.M.
- L. 5/8" round iron peg in concrete with W.M.S.
- M. 3/4" pipe in concrete with W.M.S.

Subs 1 < 2

SG. 107-8 /
S.R. 56 / 1968

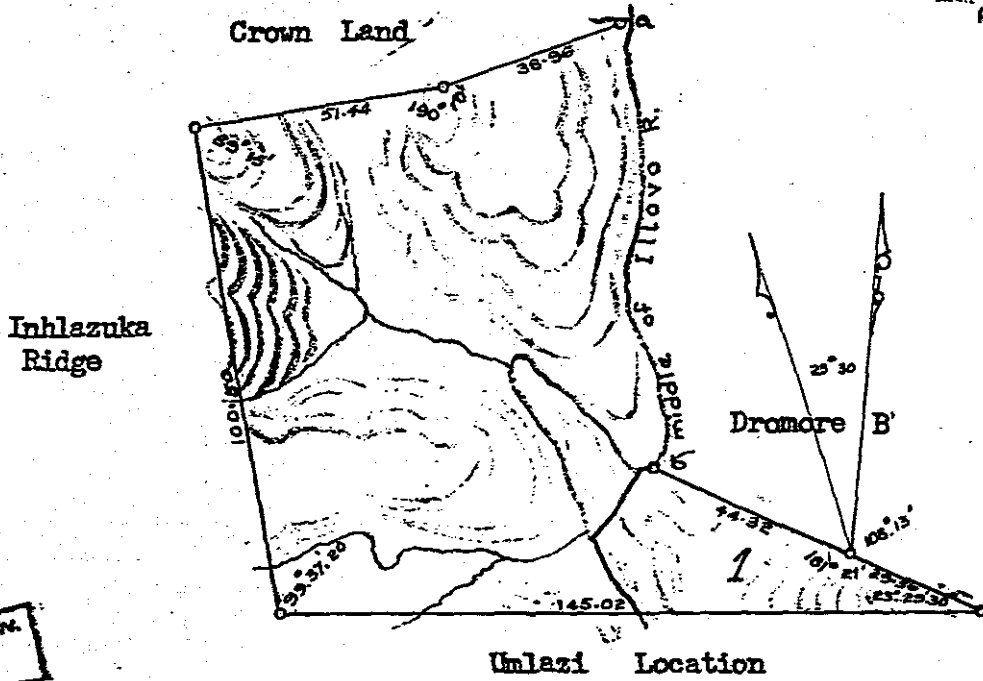
the owner of this Farm for fencing between it and Location.

Ex. of D.

EXHIBIT 2. SHIOL NO. 7290/1962

Copied from Original and Verified Correct.

F. J. Lewis
 for Surveyor General
 5.5.1962



Reg. Div.
ET

CO-ORDINATES

Y	X



The above Diagram represents the figure and extent of 1018 Acres 0 Roods 0 Perches of land known as

Shiol No. 7290

situated in the County of

Pietermaritzburg

Colony
 Province of Natal

Bounded: N. by Crown Land
 E. by Illovo R.
 N.E. by Dromore B
 S. by Umlazi Location
 W. by Inhlazuka Ridge

FOR ENDORSEMENTS, etc., SEE

Compiled in the Surveyor General's Office
Surveyed by me,

(Sgd) F.J.Lewis
 for Surveyor General

5/8/62

COMP. ET 2A. ET 1B ET 1C

EXHIBIT 3. DALSTON NO. 13456/1924



SIDES.		ANGLES.		
AB	74.199	A	84 2	40
BC	38.659	B	46 19	0
CD	51.300	C	169 50	0
DA	58.534	D	59 48	20
AA	6.0			
BB	1.8			

Direction AB $113^{\circ} 35' 0''$
 Azimuth AB $113^{\circ} 20' 33''$

Origin Lot 29		
Y	CO-ORDINATES.	
A	+2311.401	-55.
B	+2379.403	-55.
C	+2343.747	-56.
D	+2293.676	-56.



SCALE OF CHAINS

The above diagram lettered A Inner bank Illovo River B C D represents 379 Acres 1 Rood 24 Perches of land known

THE FARM DALSTON No 13456

situated in the County of Pietermaritzburg Province of Natal
 Bounded as indicated above. FOR ENDORSEMENTS, etc., SEE B

Surveyed by me,

Jan. H. Steen

27576

D/G No 82/1947

Government Land Survey

100.923.

OFF.
ESIG.

EXHIBIT 4. FARM SG. NO. 1633/1964

Scaw Fell No. 9583
~~5993~~

Survey
26.

Fairfield
No. 1809

Sub 1
S.G. No. 2003/12
S.R. 255/126.

Skiddaw No. 8544

A of Dromore
No. 2091

Ismont No. 3907

Garvaughy
No. 2238

Ismont 3 No. 4836.

of land being

- Grant No.
- No. 3011
- No. 5926
- No. 8110
- No. 89/1946
- No. 3911
- No. 3550
- No. 6066
- No. 3623

Province of Natal.

BEACONS D, E, F, G. REPLACED, RELOCATED	VIDE S.R. NO. 112/1976.
--	----------------------------

Scale 1:25,000

76 *G. N. Holder*
Land Surveyor.

The farm Shiol (Fig. 3) next to Drommore had been acquired in the same way (Mkhize, J. Oct. 1998). The farmer owning it specialised in keeping Afrikaner cattle. Unlike Campbell who practised intensive cattle farming, he practised extensive farming, he also had a compound for a his workforce. He did not have his farmstead on this farm and seldom came to check them. This farm has also been handed over to the Ngonyama Land Trust, with Zwelonke Chonco as caretaker (Khumalo, 1998).

Mkhize, a headman from Mpangisa, has since asked Chonco to allow him to use the compound site to house one of his wives. Chonco seemed to have contravened some clauses on the Ingonyama Land Trust because there are already few homes that have been built in this farm (Lembede, 1998).

3.3 RECENT LAND INVASIONS AND DISPOSSESSION

It was established from this study that further land dispossession is going on. Runnymede farm (Fig. 3) which belongs to a magistrate continues to expand every year. The people of Mpangisa are frustrated, angry and very worried about this.

Another farm that has recently been extended belongs to the farmer known as Peter. He recently fenced in the field belonging to the family of Ndlovu. Ndlovu has had to leave his home and join his relatives at Ixopo, because apart from this dispossession, Peter had instructed him to get rid of his goats or else he was going to shoot them (Kweyama, 1998).

The questionnaire interviews showed that there were many incidence of recent land

dispossession and evictions. About 13.3 percent of the respondents have been victims of evictions (Table 3.1). About 25.0 percent were the off-spring of parents who were evicted. The majority, i.e. 61.7 percent, were those who were forced into labour tenancy. These indigenous Zulu people were forcefully evicted from the land that truly belonged to them. They were born and bred there and, according to Kweyama (1998) the people that deserved evictions were the white farmers, who invaded the poor people's land.

Table 3.1 People evicted from their Farms

Eviction	Occurrence	Percentage
Parents victims of eviction	8	13.3
Off-spring	15	25.0
Forced into Labour tenants	37	61.7
Total	60	100.0

3.4 THE ROLE OF SURVEYORS IN THE PLIGHT OF THE RESIDENTS

Mpangisa was originally surveyed in 1895 with the area of 1442 acres which is smaller than some of the farms in the area e.g. Java Heights (Fig. 3), surveyed in March 1857, had an area of 3000 acres and Fairveld, surveyed in 1860, had an area of 2111 acres (Mkhize, 1998).

The surveys are recent, yet they were done long before the 1913 Land Act. According to

A.H. Hugo (1998), the controlling officer at the Land Surveying Department, the only information that is available concerning land ownership is the ownership at the original survey and nothing beyond that. As a result of this it becomes difficult to put up a case of restitution with the Department of Land Affairs.

Some respondent who had been evicted from the neighbouring farms from their land of birth found themselves occupying rugged and barren land. The Kweyama couple were in tears when they told how a young farmer called Hampson had evicted them claiming that they were poisoning his cattle (Kweyama, 1998).

3.5 ECOLOGICAL FEATURES OF MPANGISA

3.5.1 Situation

Mpangisa is situated in the Mid-Illovo in the Natal Midlands. As a result of the history of land dispossession and evictions, Mpangisa reserve is completely surrounded by the commercial farmers with big pieces of land (Fig. 3). It is serviced by the magisterial district of Umbumbulu. Once part of a large tribal unit called Embo, Mpangisa has been reduced in size by the continued acts of land dispossession by the neighbouring farmers. Administratively the community falls under a chief whose regional tribal court is at Esimahleni in Emfume. This chief seldom comes to Mpangisa, but administers the area through a headman. The neighbouring farmers and farm tenants fall under Richmond Magisterial District.

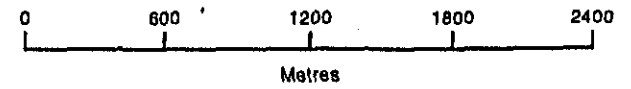
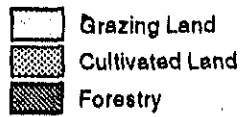
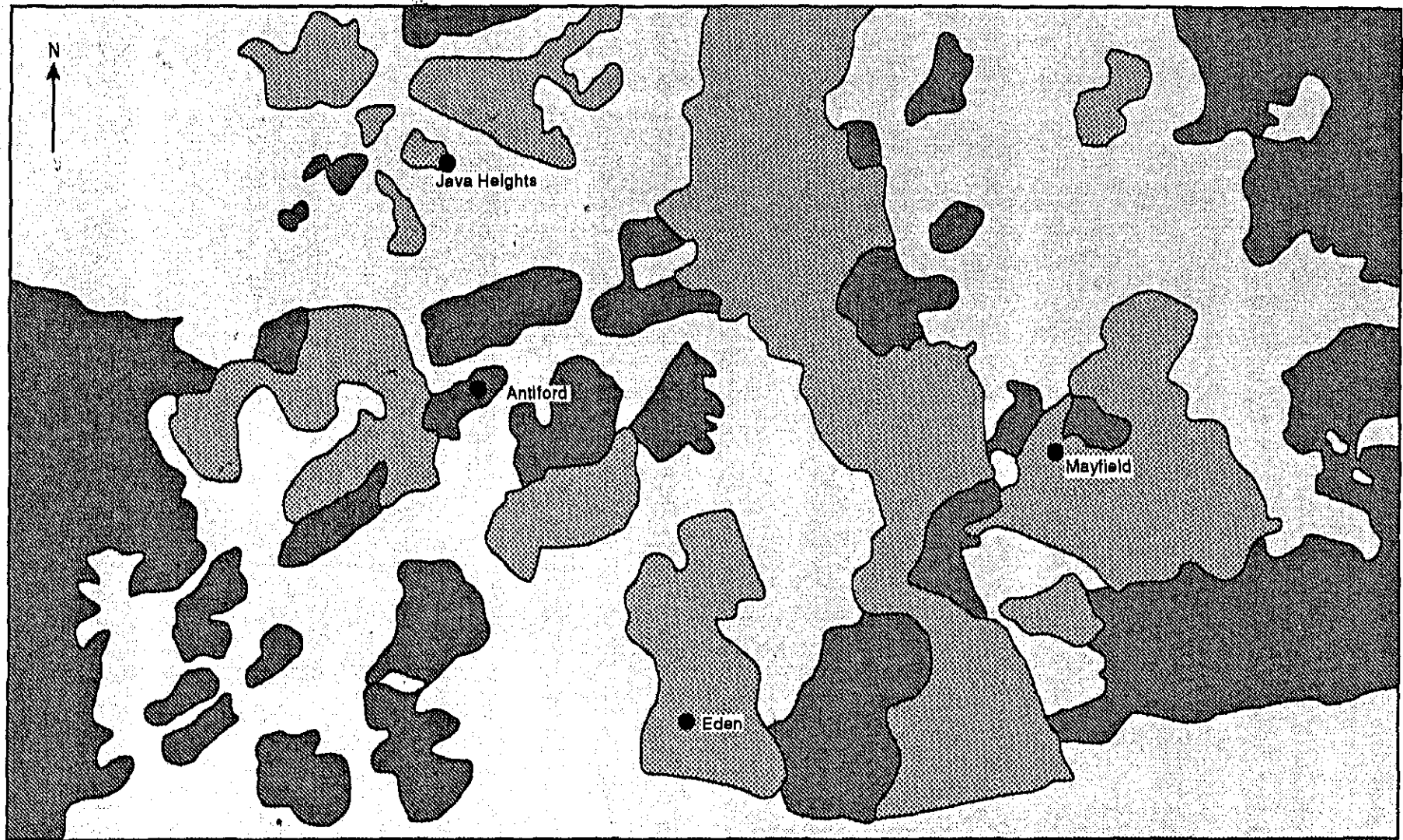


Figure 4 : Land Use Map of the Study Area.

3.5.2 Land Use in the Mid-Illovo Area

There are basically three categories of land use in Mid-Illovo as a whole, namely,

- (a) Cultivated land
- (b) Grazing land and
- (c) Forests

Table 3.2 shows that only 34.5 percent of the land is used for the cultivation of crops in the Mid-Illovo area. Most of the commercial farmers in the area cultivate sugarcane, which is an extensive type of field crop. The fact that only 34.5 percent of the land is used for cultivation is indicative of the ruggedness that some of the areas are characterised with. Hence the 39.7 percent land classified as grazing is actually veld (i.e. unusable land). This also explains why 25.8 percent of the land is forest. The forests are composed of either the indigenous wild trees or wattle trees that can grow in very rugged terrain.

In the 1960s the area was more covered in forestry (Fig) which is gradually being replaced by the cultivation of sugarcane and maize. The 1960 map, though not complete, also indicates that this area was largely occupied by the Black homes, at present there are very few of these and are all squeezed in a narrow area of Mpangisa which is referred to on the farm boundaries as Tilonko after chief Tilonko who was in charge of Mpangisa in the early part of this century.

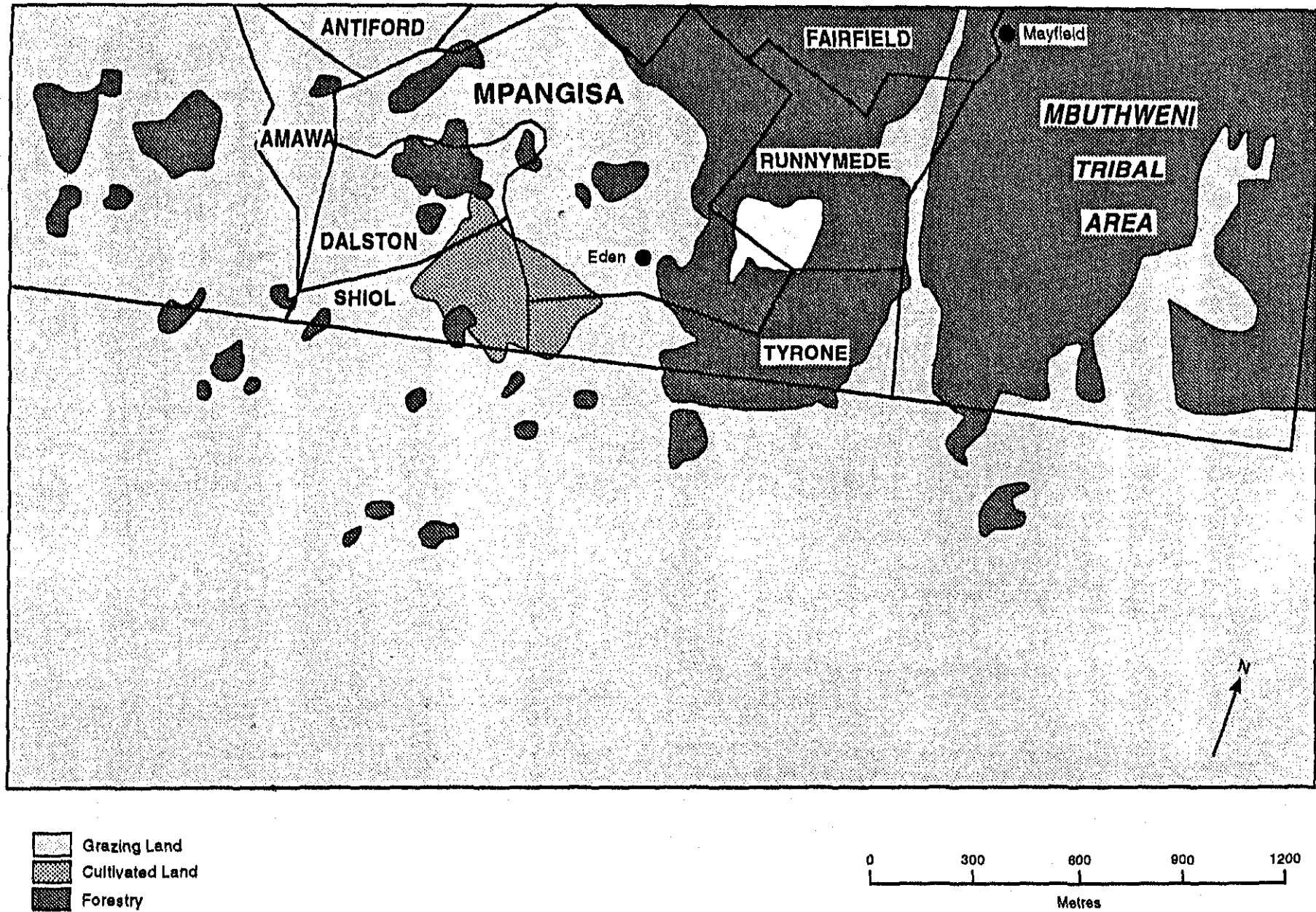


Figure 5 : Land Use Map of Mid-Ilovo in the 1960's - 70's.

Table 3.2 Land Use Categories in Hectares

Name Of Farm	Cultivated	Grazing	Forests	Total
Antiford	62	32	440	534
Drommore	127,6	230	382	739,6
Fairveld	530-	330	300	1160
Dalston	-	170	160	330
Shiol	-	590	48	638
Mpangisa-Tilonko	250	300	120	670
fairview	10	110	10,064	130,164
Werringford	150	70	-	220
Java Heights	730	170	170,084	1070,084
Clifton	301,2	20	156,48	447,68
Eden	190	40	30	260
Total	2350,8	2062,316	1816,628	6199,528

Table 3.3 Land Use Categories in Percentages

Name of Farm	Cultivated Land	Grazing land	Forests	percentage
Antiford	11.4	5.9	82.9	100.0
Drommore	17.24	31.17	51.63	100.0
Fairveld	45.7	28.4	25.9	100.0
Dalston	-	51.50	45.5	100.0
Shiol	-	92.5	7.5	100.0
Tilonko	45.5	54.5	6.61	100.0
Fairview	7.7	84.6	7.7	100.0
Werringford	68.2	31.8	-	100.0
Java Heights	68.2	15.9	9.36	100.0
Clifton	76.9	5.1	17.9	100.0
Eden	39	34.2	26.8	100.0
Total	34.5	39.7	25.8	100.0

Mpangisa is mainly composed of communal free grazing land, a few hectares of cultivated land and small forests. The grazing land is actually veld that is not in reality suitable for grazing. The landscape is so steep that it is not possible for the cattle to browse or graze without them getting hurt. As mentioned in the previous chapters the community had been squeezed out from the arable land into barren land with very poor soil. Considering the fact that the neighbouring farms were individually owned as compared to the communally owned Mpangisa, Table 3.2 show that these farms had very vast lands *per capita*. On these lands they cultivate mainly sugar-cane and maize.

3.5.3 Agricultural Land Use

The present pattern of rural land use among the peasants in Mpangisa resulted partly from the land and agricultural policies of the colonial and post-colonial governments. The two major farming systems identified among the peasants are crop raising and livestock grazing. Due to ecological and socio-economic constraints production in both these farming systems is at subsistence level.

The white farmers helped themselves to all the agriculturally productive parts of this land leaving this community with the small barren, unproductive and non-arable pieces of land. Most of its slopes have gradients of about 1:12, that is about 40 percent. Some places worse than this, for example, Kweyama house is situated on a slope of about 1:8, which is very close to 50 percent.

Mpangisa is characterised by a rugged terrain with soils that are not suitable for cultivation.

It has sufficient and good rainfall. The runoff is, However, high because of the depletion of the natural vegetation by over-grazing and because of ruggedness. For agriculture to thrive under such conditions there should be some extensive irrigation.

Because of the ruggedness it is not easy to use oxen for ploughing. The use of tractors is even more difficult except where the slopes are gentle. Many people cannot afford to hire either oxen or tractors. They end up having to use traditional tools such as hoes and forks. This means that only small pieces of land could be tilled to produce food for subsistence.

Most of the land is used for the growing of maize and beans .A few other people grow crops such as sweet potatoes, amadumbe, vegetables (see Table 4.6). The crops that are grown here produce a very low yield as a result of poor type of seeds that are shared between the members of the community and because of poverty that makes it impossible to buy good breed of seeds. The land is barren requiring the use of fertilizer which costs R80 a bag. Those who have cattle and goats sometimes tether them on the fallow land to graze on the stubble or grass.

3.5.4 Population

There about 300 homesteads in Mpangisa, with a population of about 2 400. The area has lost most of its productive men and women as a result of the 1980's violence that left a lot of the population either orphaned or widowed. Those who were able to build houses away from this area left in greater numbers. With the advice of the agricultural officer they have all built their homes on the southern side of the river and left the barren side for the

suggested growing of forest trees.

Many households in Mpangisa are landless, poor and illiterate. Due to lack of employment opportunities, many people depend on migrant labour remittances.

3.6 SUMMARY

The historical account of Mpangisa, which was collected from oral information, portrays the salient features of this community. Not only does it show how land dispossession was carried out with the backing of official structures such as the courts and the department of surveying, but it also shows how severe the dispossession have been on the deprived community. The historical account gives the subtle facts on how communities were marginalised and impoverished by colonial and Apartheid land and agricultural land policies.

As a result of the history of land dispossession and evictions, Mpangisa reserve is completely surrounded by the commercial farmers with big pieces of land. The situation of Mpangisa in Mid-Illovo makes it an island of misery in the midst of plenty. Its situation was complicated by the racial laws of apartheid which declared separate facilities for the different racial groups. Hence although Mpangisa is serviced by the Umbumbulu magisterial district, and is administered by the chief of Emfume, the neighbouring farmers and farm tenants were administered and serviced by the Camperdown Magisterial District. This is part of the problem experienced by the residence in dealing with their problems.

CHAPTER FOUR

ANALYSIS AND INTERPRETATION OF LIVELIHOODS DATA

4.1 INTRODUCTION

Chapter four deals with the interpretation and analysis of the research data. As indicated in Chapter two, the data was gathered by the combination of a questionnaire survey, unstructured interviews and field observation.

4.2 CHARACTERISTICS OF THE RESPONDENTS

4.2.1 Age and sex structure of the respondents

Of the sample of 60 respondents 60.0 percent were females while males constituted 40.0 Percent. Most women headed their families and most household work fell on their shoulders. This ratio is representative of the reality of the situation in Mpangisa where the number of females is generally higher than that of the males. This is partly associated with male migration into towns and cities for wage labour, and the fact that most of the males were killed during the faction fights of 1984-1990. Some male heads come home during the weekend only while some still stay for long periods in their places of employment leaving the responsibilities with their wives.

Table 4.1 Sex Structure of the Respondents

Gender	Occurrence	Percentage
Females	36	60.0
Males	24	40.0
Total	60	100.0

Table 4.2 Age of Respondents

Age	Male	Female	Total	Percentage
20-30	2	5	7	11.7
31-40	10	13	23	38.3
41-50	4	7	11	18.3
51-60	1	4	5	8.3
61-70	5	5	10	16.7
71 +	2	2	4	6.7
Total	24	36	60	100.0

Table 4.2 shows that 38.3 percent of the respondents were between the ages of 31 - 40 and 18.3 percent between the ages 41-50. About 11.7 percent of the respondents were young people (20-30 years old) which is abnormal, compared with the norm at Mpangisa. The percentage of respondents above the age of 60 is 23.4 percent. In most percentages of the homes that were visited the heads of the family were older than 40 years. They were people that had to look after their grand-children while their daughters were gone to work. In a number of cases they were not even their grandchildren, but were orphans that had lost their parents during the faction fights.

4.2.2 Employment Status of the Respondents

Only 30.0 percent of the respondents were employed as wage labourers in neighbouring

farms. About 48.0 percent lived on pension and grants, and 23.3 percent were unemployed. The unemployed were mainly the unskilled workers.

Table 4.3 Employment of Respondents at Mpangisa

Description	Occurrence	Percentage
Employed	18	30.0
Unemployed	13	23.3
Pensioners	23	38.6
Getting Grants	6	10.0
Total	60	100.0

4.3 RURAL LAND USE IN MPANGISA

The poor farmers of Mpangisa are marginal farmers, share croppers and agricultural labourers. They form an inert, inarticulate and unorganised mass, characterised by powerlessness, vulnerability, isolation and physical weakness. They continually fall prey to a vicious circle of poverty.

The total land area of Mpangisa is 670 hectares. Considering that there are about 300 homesteads in the area, the *per capita* distribution of land is about 2.2 hectares. Table 4.4 indicates that grazing land in Mpangisa constitutes 44.8 percent of the total land area. As already mentioned, this land is so steep, stony and rugged that it can only be regarded as rough grazing land rather pasture land. There are very few cattle that graze in that land, neither is there any cultivation. The cultivated land is 35.8 percent of the total land area. It is about 240 hectares in size. This gives a *per capita* hectareage of less than one hectare per homestead.

Fig. 6 Land Use Categories

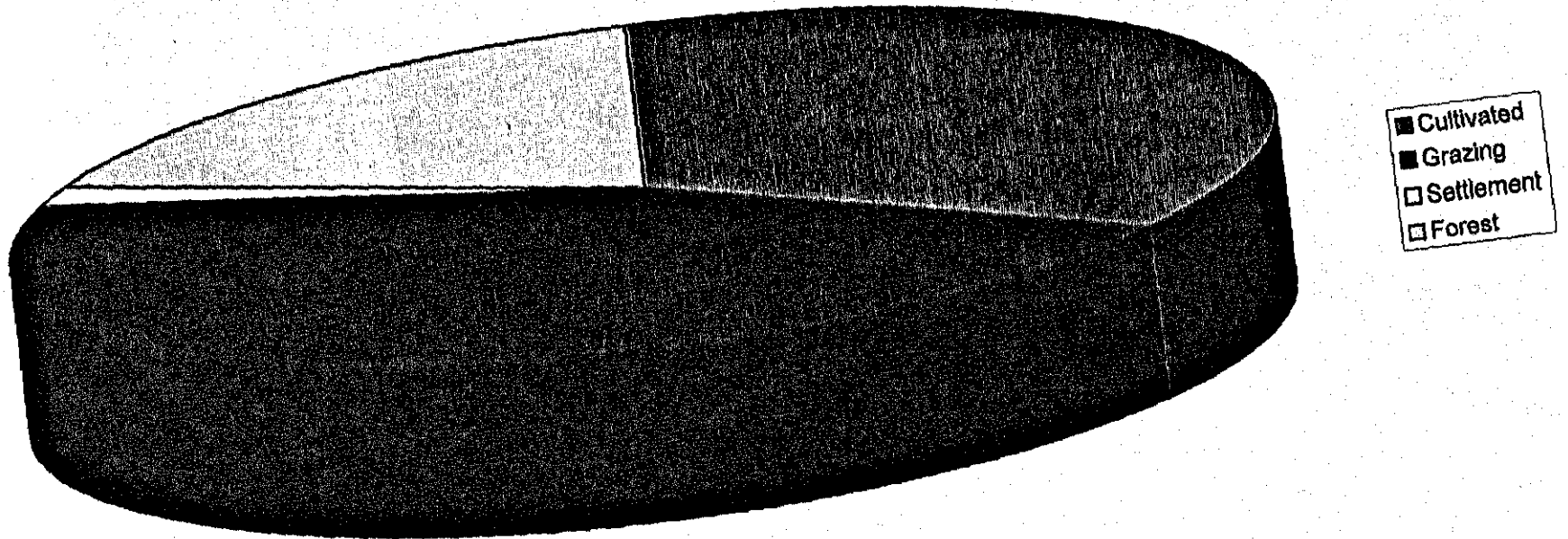


Fig. 7 Size of Agricultural Land

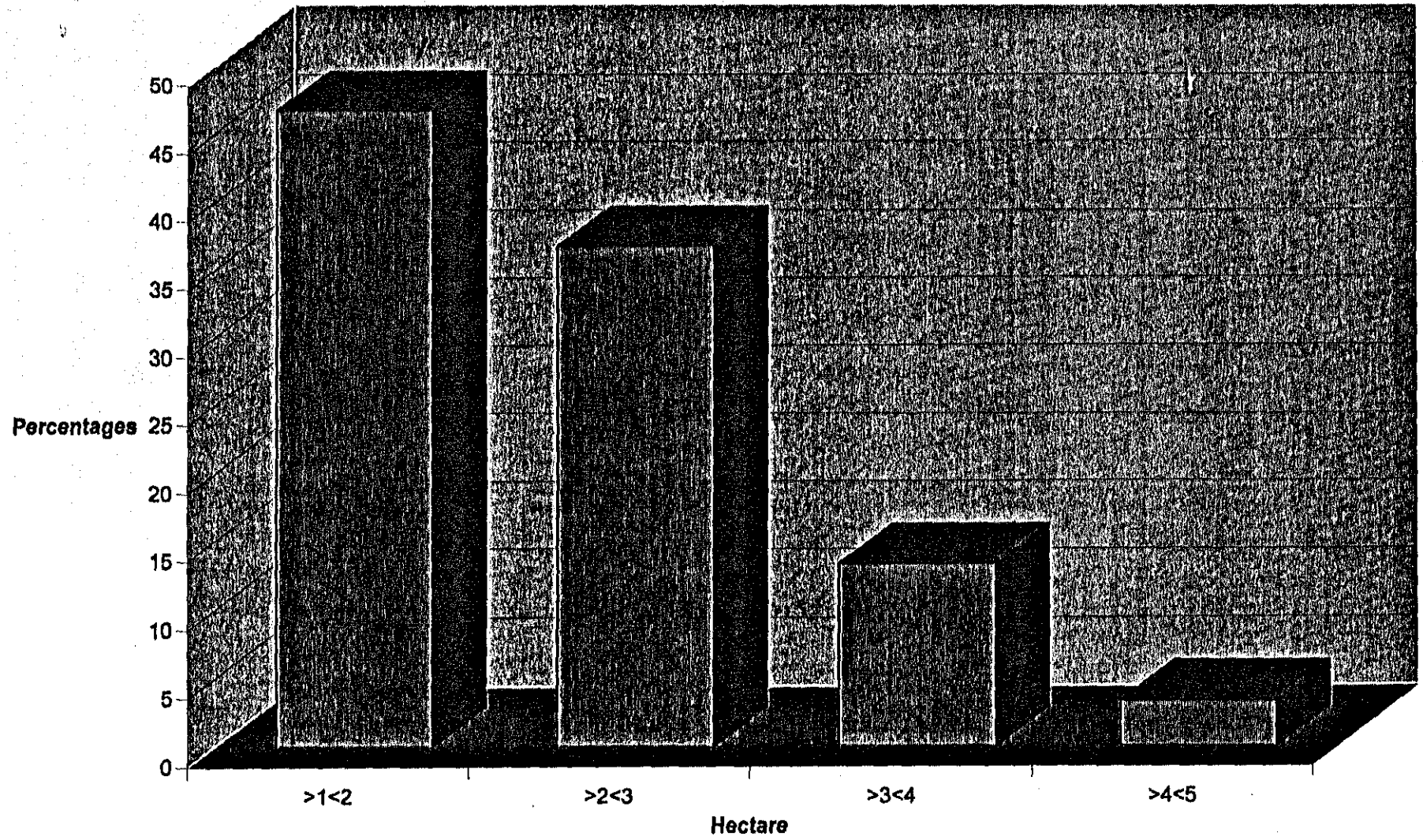


Table 4.4 Rural Land Use in Mpangisa

Land Use Category	Hectares	Percentage
Cultivated land	240	35.8
Grazing land	300	44.8
Settlement	10	1.4
Forestry	120	18.0
Total	670	100

4.3.1 Size of land holdings

Table 4.5 shows that the amount of land allocated per household in Mpangisa is small, with about 46.7 percent of the respondents having landholdings of 1-2 ha. Of the 60 respondents only two had between 4 and 5 ha.

Table 4.5 Size of Agricultural Land

Size in Hectares	Occurrence	Percentage
1-2	28	46.7
2-3	22	36.7
3-4	8	13.3
4-5	2	3.3
Total	60	100.0

4.3.2 Types of Crops Grown

Table 4.6 shows that all the respondents cultivate the combination of maize and beans. Vegetables were grown by 16.6 percent of the respondents while sweet potatoes and madumbe were the least grown (with 6.6 percent and 8.3 percent respectfully).

Table 4.6 Types of Crops

Description	Occurrence	Percentage
Maize	60	100.0
Beans	60	100.0
Vegetables	10	16.6
Sweet potatoes	4	6.6
Madumbe (corms)	5	8.3

4.3.3 Agricultural Inputs

Table 4.7 shows that 100.0 percent of all the respondents said that they used fertilisers and use that especially in the growing of maize. Some said that they used both commercial fertilizers and kraal manure for the root crops. They further stated that they bought the commercial fertilisers from the white farmers at the price of R80 for a bag of 50 kg.

Table 4.7 Agricultural Inputs

Description	Occurrence	Percentage
Commercial Fertilizers/Manure	60	100.0
Oxen Hire	40	66.6
Tractors Hire	19	31.6
Kraal Manure	40	66.6
Pesticides	none	-
Maize Seeds From own Fields	60	100.0
Buying of Seeds	60	100.0

Though they were pestered by worms and blight in maize and beans, none of the respondents used any pesticides. All the respondents said that they bought bean seeds from Isipingo, but used maize seed from the previous harvest.

4.3.4 Cultivation Methods

Some 66 percent of the respondents hired oxen to cultivate the land while 19 percent had for the first time hired tractors from their white neighbour. They thought it was cheaper to hire tractors than to hire oxen.

4.3.5 Livestock keeping

Because of the shortage of land, 60 percent of the respondents can only afford to keep chicken. About 20 percent of respondents keep goats and chicken and only 16.6 percent can afford to keep cattle in addition to goats and chicken. Of those who own goats, about 20.0 percent stated that they were often forced to sell their goats to buy food and other household commodities. All respondents kept chickens, many of them owning less than 10 chicken at a time, which they said they used mainly for domestic consumption.

Table 4.8 People who own Livestock

Description	Occurrence	Percentage
Cattle, Goats, Chickens	10	16.6
Goats, Chickens	12	20.0
Chickens	60	100.0

4.4 SOCIO-ECONOMIC CONSTRAINTS

Mpangisa has no economic infrastructures whatsoever, such as government services, transport systems, communications e.g. telephones, no shops, clinics and developmental training centres etc. Such infrastructures play an important role in the development of any country. It makes it possible for the development and access to the world of technology of communities even such as Mpangisa areas.

4.4.1 Source of Water Supply

Table 4.9 indicates that water is a serious problem in Mpangisa. About 60 percent of the respondents fetched their water from streams, springs, rivulets, wells and rivers. Much effort and time is used in this task. In most cases these types of water supply were polluted and not fit for human consumption. Only 40 percent of the respondents had access to clean tap water.

Most of the people who use river water complained that government officials had some water pipes measured into the ground but no pipes were connected.

Table 4.9 Source of Water

Source	Occurrence	Percentage
Tap Water	24	40.0
Streams	17	28.3
Rivers	19	31.7
Total	60	100.0

4.4.2 Energy sources

Table 4.10 shows that the demand for firewood has overtaken the natural growth of trees. The respondents who used wood constituted 36.7 percent of the total. Time and human energy is channelled into the unproductive work of gathering wood. Trees have been depleted by the use of fuel-wood and by the construction of kraals, thorn fences, grain stores, wood carving, medicines, etc. About 25.0 percent of the respondents used paraffin and wood. While the rest (3.3 percent) of the respondents used a combination of wood, paraffin and/or gas. There is no electricity in Mpangisa though the farmers are all supplied with electricity. These electrical wires pass over and above the Mpangisa areas with no provision for electricity what-so-ever for the poor indigenous people.

Table 4.10 The source of fuel in Mpangisa

Source of Fuel	Occurrence	Percentage
Wood	22	36.7
Paraffin	15	25.0
Gas	4	7.6
Wood and Paraffin	15	25.0
Wood and Gas	2	3.3
Wood, Gas, Paraffin	2	3.3
Total	60	100.0

4.4.3 Road Transport

The roads in Mpangisa are poor, and cannot be used at all on rainy days. There are hardly any bridges. There is some public transport in Mpangisa, but during rainy seasons the roads cannot always be used as a result people have to walk long distances. The terrain is rugged and erosion of roads is rapid and severe.

4.4.4 Schools

The people of Mpangisa are poor and lack social facilities. The total population of 2400 have only one primary school and a high school. There are no adult education centres and no creches for young children, thus leaving many members of the community illiterate and cut off from the informative world.

4.4.5 Entertainment

In almost all households the only form of information and entertainment is the radio.

4.5 ALTERNATIVE LIVELIHOODS

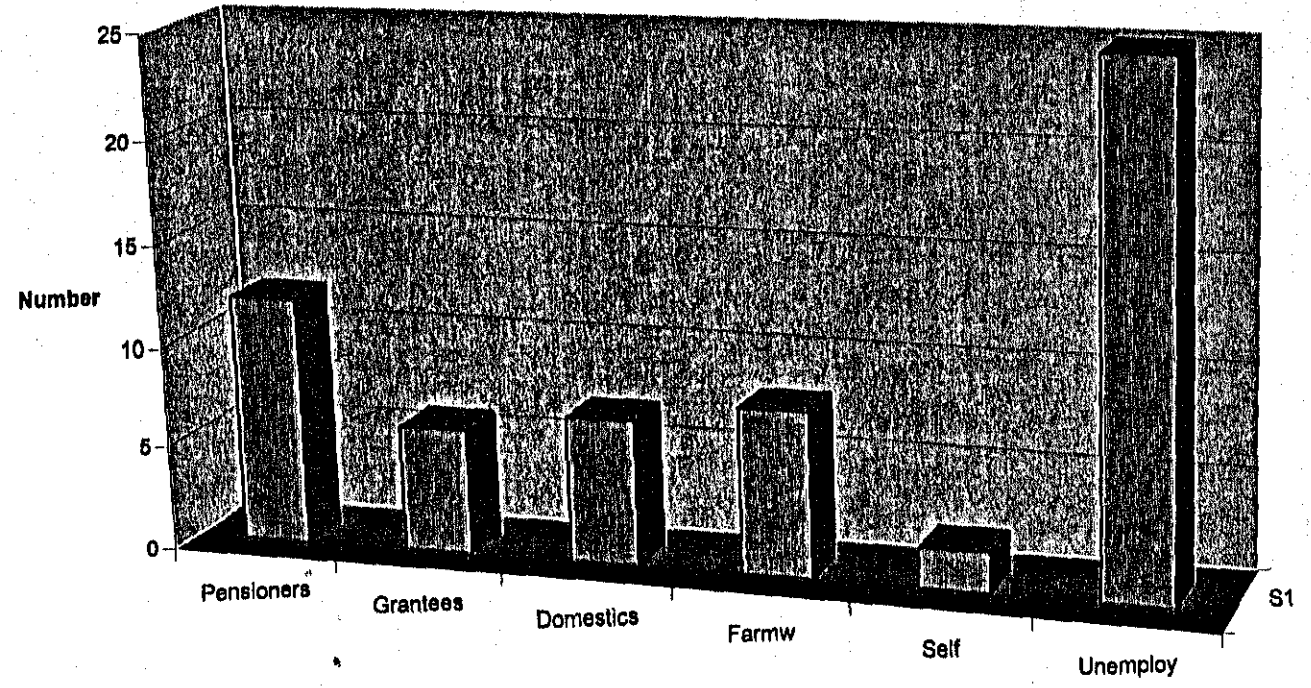
4.5.1 Migrant labour

Many unemployed young people leave this area to work in cities like Pietermaritzburg, Durban and even Johannesburg. Some of these youths come home once a year, some come home every weekend. There is a high rate of school dropout because of the eagerness among the youth to leave for better jobs and accommodation in the cities.

4.5.2 Sources of Cash for Local Residents in Mpangisa

The residents of Mpangisa had diverse sources of cash income. Although this is not substantial, it does help alleviate hunger. About 41.7 percent of the respondents were unemployed, 20 percent were pensioners, 10 percent lived on

Fig. 8 Cash Sources of the Respondents



welfare grants and only 28.3 percent were paid workers (Table 4.11). Of the paid workers 11.7 percent were domestic workers, 13.3 farmworkers and 3.3 percent were self-employed. This shows that even the workers were of the low income group.

Table 4.11 Cash Sources of the Respondents

Category	Number	Percentage
Pensioners	12	20.0
Grantees	6	10.0
Domestic Workers	7	11.7
Farm Workers	8	13.3
Self-employed	2	3.3
Unemployed	25	41.7
Total	60	100

4.5.3 Development Projects

There are few development projects that were established for the benefit of the local community. These projects were supposed to be carried out in the schools in the afternoons as part of community development. They were meant to uplift the quality of life of the Mpangisa community. In actual fact, there could have been many projects that should have been introduced in Mpangisa. Many of these projects have, however, failed because of ignorance and uncontrolled greediness of some members of the community.

4.5.3.1 Community Vegetable Gardens

One of the useful projects initiated by the extension officers in Mpangisa is community gardens. The participants in these projects were mainly women who club together to produce vegetables jointly and then share the produce. As these gardens are dependent on irrigation, they are mainly situated along the valley of streams. They are thus limited in number and plot size, and since water is a serious problem at Mpangisa many of them have not been very successful. The more successful ones were those irrigated from tap water which, according to Table 4. is used by only forty percent of the respondents. At the time of this research there was no water at all from these taps. The community had been out of water for some time because the two water taps they used had broken down.

4.5.3.2 Sewing Project

A sewing machine was donated by the KwaZulu Technical Training (KTT) centre for the benefit of the community. The objective was to get the community trained in sewing. The machine was handed over to one lady who claimed to represent the community. Corruption crept in, and this machine was kept and used for financial gain of only members of this lady's family.

4.5.3.3 Poultry Training Project

The KTT also invited the community to send some people for training in poultry farming. The very same family, pretending that they were representing the community, went there to learn poultry farming. They never imparted this knowledge to any member of the community. The people were once more helpless, and they do not seem to know where to go whenever things go wrong.

4.5.3.4 Other Projects

There are a few other government projects intended to train the Mpangisa community in skills. Instead of delegating some of these training activities to other members of the community, the community leaders tend to attend the training sessions themselves without imparting the acquired knowledge to the community. This includes a candle manufacturing training, wood carving, etc. Many of these projects also failed because of the monopolising of the projects by some leaders of the community.

A few members of the community who manage to acquire handicraft skills such as wood carving, mat and basket making become discouraged to produce more items because of a lack of markets.

4.5.4 Estimated Household Income

Asked to state the estimated family income from diverse sources, only 1.7 percent of the respondents indicated that they received income above R1000 per month. About 6 percent received income of R501 to R1000 per month. The rest received income below R500 per month. There were about 18.2 percent who stated that they received income below R100 per month (Table 4.12). This is in accordance with the statement made under section 4.5.2 that the income earned by the population of Mpangisa was low.

Table 4.12 Household Income of the Respondents

Income Group	Number	Percentage
0 -100	11	18.2
101-200	0	0
201-300	18	30.0
301-400	4	6.7
401-500	22	36.7
501-1000	4	6.7
1001 and above	1	1.7
Total	60	100

4.5.5 Household Expenditure

A number of studies have been carried out on rural household expenditure in

South Africa. The results of a socio-economic survey carried out at Umbumbulu (about 15 Km from Mpangisa), which was sponsored by MacArthur Foundation of Chicago in 1992-1994 (Levin & Weiner, 1994), revealed the average annual expenditure (on food, clothing, agricultural inputs, education, fuel, health and transportation) to be R7 997. After five years (i.e. in 1998) this figure should be in the region of R10 000. This means that only those residents of Mpangisa earning R1000 are capable of making a comfortable living. As indicated in Table 4.8 only 1.7 of the respondents claimed to be in this income bracket. That means about 80 percent of the households in Mpangisa live below the breadline.

4.6 SUMMARY

Mpangisa was one of the 'native reserves' that were subjected to the colonial and post-colonial land and agricultural policies. Land dispossession has left the residents of Mpangisa landless and poor. Agricultural land in the reserve has become degraded and overpopulated by the poverty stricken rural residents and their livestock. The land cannot be used intensively because of the ruggedness, poor soils and drought which make the area unsuitable for crop cultivation.

The amount of land allocated per household in Mpangisa is small, living the

residents with no choice but to produce for subsistence only. Only 30.0 percent of the respondents were employed as wage labourers in neighbouring farms. The rest being dependent on pension and grants. Only about 1.7 percent of the households live above the breadline.

CHAPTER FIVE

EVALUATION, SUMMARY, RECOMMENDATIONS AND CONCLUSION

5.1 INTRODUCTION

The aim of this study was to examine the origin of Mpangisa reserve, its agricultural land use and the eligibility of its community as beneficiaries of the land reform programme. It was also intended to examine the different livelihoods that were sustaining the residents of this poverty stricken area.

This dissertation was based upon the following hypotheses:

1. The People of Mpangisa are landless and poor.
2. They qualify as beneficiaries under the land reform programme.
3. Land reform can help alleviate landlessness and poverty, and enable the community to achieve a sustainable livelihood.

Chapter five seeks to evaluate the validity of these hypotheses against the findings of this research.

5.2 EVALUATION

5.2.1 Hypothesis one. The people of Mpangisa are landless and poor.

Chapter three of this study has demonstrated how the people of Mpangisa were subjected to continued land dispossession and oppression by the neighbouring commercial farmers. What the study further found was that these people were victims of forced removals, which subjected them to a very unstable life. Completely surrounded by white farmers in a country that was racially divided, they continued to be the victims of plunder by greedy farmers backed by the magistrates and the land survey department at Pietermaritzburg. With increase in their population, their *per capita* land holdings shrunk to a mere one hectare per household. In section 4.3 it was further shown that the hectareage of cultivated land was not equitably distributed among the residents. About 53 per cent of the respondents claimed to have more than 2 hectares of cultivated land. From this it can be deduced that many of the homesteads in Mpangisa were landless. It can thus be stated that the hypothesis that the residents of Mpangisa are landless is valid.

From the range of crops in Table 4.6 it is obvious that most of the crops cultivated were for subsistence only. This is associated with the poor methods used for cultivation and the meagre amount of agricultural inputs used by the residents. The fact that only 16.6 percent of the residents kept cattle in a society that takes pride in keeping this type of livestock bears testimony to the shortage of land for grazing. Whereas it was found in section 4.3.5 that all residents kept chicken, almost all the survey respondents stated that they kept chicken for domestic consumption only. In short, there is no surplus production in any of the agricultural activities.

Without land for cultivation in a rural setting where there is no alternative intensive agricultural production, the alternative means of livelihood is either paid employment or self-employment. But it has been shown in chapter four that there is very little paid employment available from the neighbouring farms, and only about 3 percent of the respondents indicated that they were self-employed. The diverse sources of cash among these residents include pensions, welfare grants, petty commodity production and migrant remittances.

It has been shown under section 4.4 that Mpangisa did not have socio-economic infrastructure such as health services, water supply, electricity supply, education institutions, transport systems, communications system, etc. There were also

few development projects that were established for the benefit of the local community. The few that were introduced failed because of ignorance and uncontrolled greediness of some members of the community.

The findings of this research show that only about 8 percent of the homesteads received income above R500 per month. On the other hand it was stated that the average household expenditure was about R10 000 per annum. This makes it clear that many homesteads in Mpangisa were living below the breadline. This confirms the hypothesis that states that the residents of Mpangisa were poor, and therefore the entire hypothesis one is true.

5.2.2. Hypothesis two : They qualify as beneficiaries under the land reform programme.

It was stated in Chapter one that land reform was part of the RDP, and that the RDP was adopted by the Government of National Unity (GNU) as a means for redressing past injustices and initiating development in South Africa. It has been shown in Chapter three that the people of Mpangisa have been subjected to continued injustices by both the colonial and the apartheid government. In section 5.2.1 it was demonstrated that Mpangisa is an underdeveloped area occupied by poverty-stricken people. Therefore the community in Mpangisa

does, basically, qualify under the broad aims of the RDP.

It was stated in Chapter one that the declared objective of the land reform programme is to redress the inequities in land distribution in order to promote sustainable rural development. The approved land reform programme is based on restitution, redistribution and tenure reform. It is necessary to examine each of these sections of the land reform programme in order to relate it to the problem of the community of Mpangisa.

Land restitution is aimed at restoring land to people who were dispossessed by discriminatory legislation since 1913. The purpose of land redistribution is to empower the poor and landless to gain access to land lost due to apartheid Laws since 1913. Tenure reform intends to ensure security of land tenure that is community controlled and democratically allocated by community committees for all. The hypothesis is thus valid.

5.2.2.1 People of Mpangisa qualify under Land Restitution

From the account given in Chapter three of this dissertation it is morally correct that the residents of Mpangisa should qualify under land restitution. Much of the land dispossession occurred recently during the post-colonial period. Some

dispossession were even taking place in the 1990's. There are, however, technical problems with the definition of land restitution. Land restitution is aimed at restoring land to people who were dispossessed by discriminatory legislation since 1913. This implies people who were actually moved or evicted from their land by the Act. In essence the people of Mpangisa were dispossessed of their land by discriminatory practices, before and after the 1913 Land Act. They were, however, not directly moved or evicted by the Act itself or as a result of it.

The farms appearing in exhibits 1 to 4 were surveyed between the years 1924 and 1968. This was long after the 1913 Land Act. There was no movement on the basis of the Act which would have made the victims qualify for restitution. The dispossession were cunningly made during the surveys. On surveying the individual farms, the surveyor encroached upon land belonging to the people of Mpangisa. This was done with the full knowledge, consent, and sometimes instructions of the farmer as in the case of Zanda (discussed under section 3.2 of this dissertation). As explained in Chapter three the process was fully backed by the magistrate courts. Examples of cases that were unjustly backed by the courts are the V.T. Smith's claim of Bubula's land in which he planted the wattle forest, and Zanda's claim of Ngqokamisa. Both these cases were discussed under section 3.2 of this dissertation.

It was established from this study that land dispossession process was continuing up to recently. It was mentioned in Chapter three that Runnymede farm, which belongs to a magistrate, continues to expand every year at the expense of Mpangisa. Another farm that has recently been extended belongs to the farmer known as Peter, who encroached upon fields belonging to the family of Ndlovu. The questionnaire interviews also showed that there were many incidence of recent land dispossession and evictions.

Being supported by the courts, there was very little legal evidence that the community of Mpangisa could have against the invaders of their land. As Hugo (1998) explained, the only information that is available concerning land ownership is the ownership at the original survey and nothing beyond that. This makes it difficult to put up a case of restitution with the Department of Land Affairs. For these reasons, they do not qualify under restitution.

But with the state farms such as Shiol and Drommore, which were originally part of the land belonging to the people of Mpangisa, it should not be difficult for the government to cede them to the community under restitution. In this case the people can be compensated under restitution. The hypothesis that people at Mpangisa qualify for restitution is, therefore, valid.

5.2.2.2 Mpangisa Community qualifies under Land Redistribution

Land redistribution applies mainly to land that is undisputed. It was stated in Chapter one that Land for redistribution is acquired either from state owned land or from willing sellers. The Government provides a subsidy of R15 000 through the Department of Land Affairs and Agriculture to every eligible land beneficiary.

It was pointed out in Chapter one that the rate of land redistribution in South Africa is slowed down by administrative hurdles and the small amount of subsidy. The subsidy of R15 000 granted to land beneficiaries is insufficient to acquire land larger than two hectares. This implies that many of the land beneficiaries can at best produce for subsistence.

Mpangisa is surrounded by commercial farms. Only two of these farms are state-owned, namely Shiol to the south of Mpangisa and Drommore in the western part of Mpangisa. As stated above both are rugged and not suitable for crop raising. It seems therefore that the only farms in the vicinity of Mpangisa that contain suitable arable land are those owned individually by the white farmers. As they are mainly sugarcane producing farms that were still very productive, it is difficult to get willing sellers from these farmers. The farmers

are further protected by the property clause from being coerced to sell. It was also pointed out in Chapter one that there has to date not been a significant change in the distribution characteristics of rural land throughout South Africa under the process of redistribution. The chances of land redistribution benefiting the people of Mpangisa is thus remote.

5.2.2.3 Tenure Reform is feasible in Mpangisa

The main purpose of tenure reform is to ensure security of tenure for all. As a result of the continued land dispossession and evictions by the neighbouring white farmers, the community of Mpangisa has become marginalized. Many have become tenants to white farmers on their own land. This insecurity of tenure can be redressed by tenure reform applicable to labour tenants.

5.2.3 Land reform can help alleviate landlessness and poverty, and enable the community to achieve a sustainable livelihood.

It was stated in Chapter one that the RDP is an integrated, coherent socio-economic policy framework which was supposed to be achievable and sustainable, and was expected to meet the objectives of freedom and an improved standard of living and quality of life for all South Africans within a

peaceful and stable society. It was also stated that the RDP can be implemented only if it is people-centred, and if the planning and co-ordinating process allows the active involvement of democratic structures.

It has been pointed out under section 5.2.2 that there were many hurdles in the application of the land reform programme in Mpangisa. Part of the problem results from the lack of organisation and action on the part of the community. They form an inert, inarticulate and unorganised mass, characterised by powerlessness, vulnerability, isolation, poverty and physical weakness. As the RDP relies on people's energies to drive the process of meeting these needs, the prospects of alleviating rural poverty in Mpangisa are reduced. As pointed out in section 5.2.2.2 above, subsidies *per se* do not necessarily provide sustainable livelihoods.

5.3 SUMMARY

The present land distribution in South Africa emanated from a history of land dispossession and racially rooted land legislation. The present state of agriculture is to a large extent influenced by present and past land policies of the Region.

Colonial dispossession of land in Mpangisa began in the 19th century and was still going on undisturbed until recently. The ignorance and poverty of the residents subjected them to this situation. Their mistake was the friendliness and hospitality they had for the strangers that arrived in their land. Their generations are now reaping the fruits of this kindness.

The historical account of Mpangisa, which was collected from oral information, portrays the salient features of this community. Not only does it show how land dispossession was carried out with the backing of official structures such as the courts and the department of surveying, but it also shows how severe the dispossession have been on the deprived community. The historical account gives the subtle facts on how communities were marginalised and impoverished by colonial and Apartheid land and agricultural land policies.

The present pattern of rural land use among the peasants in Mpangisa resulted partly from the land and agricultural policies of the colonial and post-colonial governments. The two major farming systems identified among the peasants are crop raising and livestock grazing. Due to ecological and socio-economic constraints production in both these farming systems is at subsistence level.

Mpangisa is situated in the Mid-Illovo in the Natal Midlands. As a result of the

history of land dispossession and evictions, Mpangisa reserve is completely surrounded by the commercial farmers with big pieces of land. It is serviced by the magisterial district of Umbumbulu. Once part of a large tribal unit called Embo, Mpangisa has been reduced in size by the continued acts of land dispossession by the neighbouring farmers. Administratively the community falls under a chief whose regional tribal court is at Esimahleni in Emfume. This chief seldom comes to Mpangisa, but administers the area through a headman. The neighbouring farmers and farm tenants fall under Richmond Magisterial District.

The population of the area has been growing by natural increase as well as by immigration of labour tenants who have been evicted from neighbouring farms. This growth of population has resulted in overpopulation and overstocking which are causing soil erosion. Lack of land and other resources is associated with faction fighting.

There are no development programmes in Mpangisa. A few socio-economic facilities such as schools, a clinic, and shops cater for the bare needs of the people. Lack of health facilities is related to the high incidence of infant mortality and other poverty related diseases such as tuberculosis.

As a result of the history of land dispossession and evictions, Mpangisa reserve is completely surrounded by the commercial farmers with big pieces of land. The situation of Mpangisa in Mid-Illovo makes it an island of misery in the midst of plenty. Its situation was complicated by the racial laws of apartheid which declared separate facilities for the different racial groups. Hence although Mpangisa is serviced by the Umbumbulu magisterial district, and is administered by the chief of Emfume, the neighbouring farmers and farm tenants were administered and serviced by the Camperdown Magisterial District. This is part of the problem experienced by the residence in dealing with their problems.

The case of Mpangisa is similar to that of the Majaoni of Kenya. As a small community that was marginal in terms of the terms and conditions of the land reform programme they are left to fight their own struggle for the restoration of their land.

5.4 RECOMMENDATIONS

Land reform is a means by which this redress can be achieved. As explained by Pask & Williams (1993) and Yugandhar (1996) land reform throughout the world implies not only distribution of surplus land but also the improvement of

the conditions of tenancy, agricultural credit, cooperative organisation, agricultural education, marketing and advisory services. The RDP also confirms that one of the aims of the land reform programme is a tenure reform, whereby the landless are given the opportunity to own land. These processes have been carried out in many countries throughout the world, and there is no reason why the people in Mpangisa should not benefit from the land reform programme.

Mpangisa area has deteriorated due to overgrazing, over-population and the shortage of land, and therefore, needs urgent remedy. The Reconstruction and Development Process with its Land reform policy seemed to have an answer for the masses of people whose land was forcefully taken away from them by the previous governments. The solution for the political struggle over land ownership, land access and land use lies in the Land Reform Policy. Land Reform Process of restitution and redistribution of land to the dispossessed people in Mpangisa would redress the injustices of the past.

It is recommended in this dissertation that all state-owned land in the vicinity of Mpangisa be transferred to the community of Mpangisa as a first step. This will relieve the already existing pressure on agricultural land. Prior to the release of the Ingonyama Land Trust land, the community should be given intensive training in land management. This would ensure that people could be

able to cultivate the land profitably for food and still have surplus for income security. They also need the community representation in the local government through project management. A coordinating committee of people chosen by the community could be an added asset. The committee would be duty bound to inform people of the progress of the government structures and would consult with the people so that their real needs might be communicated to the authorities. The committee would make sure that the types of development that are established in this area are consistent with the needs of the community, are viable and sustainable.

A coordinating Committee would be the eye of the justice working in close proximity with the headmen to solve conflicts that constantly drive this area into faction fights. The committee in order for it to function well with neutral independent people should include the two teachers of the primary and high schools (the only two schools in Mpangisa area). The teachers are also stakeholders since they enjoy the progress of this community and they spend most of their time in this area. If possible voluntary work could be encouraged, for the inapt community this would bring back their pride, that feeling of knowing that they are contributing in the upliftment of their own area and are doing something for themselves.

This committee would be encouraged to join with the Farmers' organisation so that there would be some form of combined efforts to control the conflict that exist between the community and the farmers, this will break the mistrust and disrespect that exist here. This hopefully can moderate and negotiate the exploitation of the farm workers without any conflict. Democracy would finally be a reality in this area, the ever extended boundaries would be monitored and perhaps they would even consider inter farming procedures. This is a small community that would be an ideal model of the programmes of restitution and redistribution and the ideal control of the land tenure.

Maps if any should be made available. As we have seen in the previous chapters, Mpangisa has a high rate of the elderly people who know the area, boundaries and its history well. These are the people who should be engaged in the restructuring of the Mpangisa area.

With the mobilisation of the people of it would be possible to have these committees to participate in other aspects of the RDP. The government needs to be involved in assisting the people of Mpangisa with the financing of the RDP projects.

Infrastructure is needed for health services, educational institutions, water

supply, electricity supply, transportation, etc. all of which are either non-existent or poorly developed in Mpangisa.

People with skills e.g. Mr. Magcaba, should be encouraged to develop these skills and train other community members, so as to create jobs and lift up the quality of life of the residents. There is a lot of resources for wood carving and other woodwork from the prevailing forests. At the present time many white farmers sub-contract black labour to produce many items of value from wood. The major profits go to the white farmers while the people actually doing the jobs remain poor.

It is vital that the stability of this area is maintained through facilitation of community involvement in the government strategies such as fair administration of Justice that overlooks the racial differences. This would make it easier to entertain and achieve a non-gender, non-racial and non-class solutions that will effect long life peace and stability within the community and between the farmers and black communities.

5.5 CONCLUSION

This research has demonstrated how the community of Mpangisa has been

dispossessed of their land over the years. It has shown that Mpangisa community is poverty-stricken as a result of continued land dispossession and exploitation. The obvious solution to their plight is the application of the land reform programme. The marginal nature of their problem *vis-a-vis* land reform and their isolated situation in the midst of thriving commercial farms has, however, placed them in the limbo of a forgotten people. It is hoped that this dissertation will draw attention to the plight of the people of Mpangisa.

SELECTED BIBLIOGRAPHY

African National Congress, 1994 : *The Reconstruction and Development Progress*. Manyano Publication, Johannesburg.

Beinart, W. and Bundy, C (eds), (1987) : *Hidden Struggles in Rural South Africa: Politics and Popular Movements in the Transkei and Eastern Cape*, Raven Press, Johannesburg

Bowler, W., Clark, G. and Iblery, B. 1996 : *Sustaining Farm Household in the Lagging Region of the European Union, Geographic Perspectives on Sustainable Rural System*, Sasaki, H., Saito I. , Tabayashi, A. and Morimoto, T. (eds) Kaisei Publication Tokyo

Brand, S.S., Christodoulo, N.T., Van Rooyen, C.J. and Vink. 1992 : *Agriculture and Redistribution : A Growth with Equity Approach*, Development Bank of Southern Africa Paper , Midrand.

Bromberger, N. and Antonie, F., 1993 : *Black Small Farmers in the Homelands : Economic Prospects and Policies*, in Lipton, M. and Simkins, C. (eds), *State and Market in post Apartheid South Africa*, Westview Press Boulder

Bundy, C. 1979 : *The Rise and Fall of the South African Peasantry*, Heineman, London

Chambers, Z. 1995 : *Poverty and Livelihood, Whose Reality Counts*, The Institute of Development Studies.

Christianson, R. and Cooper D., 1994 : *Land Reform in South Africa: process and product*, paper prepared for the 14th World Bank Agricultural Symposium: *Agriculture in liberalizing economies: changing roles for government*, January 5-6.

Cobbett, M. 1984 : *Sugarcane farming in KwaZulu: two communities investigated*, *Development Southern Africa*, 1(3&4), 369-385.

Cross, C. and Haines, R. (eds), 1988: *Towards Freehold: Options for Land and Development in South Africa's Black Rural Areas*,

Davenport, T.R. H., 1990 : *Land legislation determining the present racial allocation of Land*, *Development Southern Africa* vol.7 (special issue), 431-440.

Davies, C. J. 1998 : *Land Management of an Informal Settlement in East London*, Natal University , Durban

de Klerk, M. and van der Brink ,R. , 1993: *Model of Agricultural Land Use Activities and Rural Livelihoods*, paper presented at the Land and Agriculture Policy Centre conference on land redistribution options, October 12-15, Johannesburg.

Dormer Peter, 1991 : *Latin American Land Reforms in Practice as Respective Analysis*,

Library Congress Cataloguing in Publication Data .

Environment Monitoring Group, 1992 : *Towards Sustainable Development in South Africa*, Vredehoek, Cape Town

Erkstine J.M. 1982 : Rural Development Studies at the Institute of Natural Resources, in Bromberger, N. & Lea, J.D., *Rural Studies in KwaZulu*, Proceedings of a Symposium held at the University of Natal, Pietermaritzburg 14 September, 1981.

Fothering, P. J. (1981) : *Agriquest*, Department of Agriculture and Fisheries, Pretoria.

Gandar, J., 1992 Rural Development Studies at the Institute of Natural Resources, in Bromberger, N. & Lea, J.D., *Rural Studies in KwaZulu*, Proceedings of a Symposium held at the University of Natal, Pietermaritzburg 14 September, 1981.

Greenwood, J. (1995) : *Interpretations of sustainability, The Sustainability of Rural Systems*, in Bryant, C.R. and Marois, C. (eds), University of Montreal, Montreal.

Greyling, J.J.C., 1969 : *Problems of Indian Land Ownership and Land Occupation on the Natal North Coast*, a Socio-geographic Investigation (vol. 1 Text), University College.

Hamilton, and Bradon, 1962 : *Contemporary Problems of Land Ownership*, Cambridge.

Hoben, A., 1973 : *Land Tenure Among the Omhara of Ethiopia*, University of Chicago and London 1973

Hornby, A. D., 1997 : *An Analysis of the Development Constraints on a Micro-Institution in the KwaZulu Natal Land Reform Pilot Programme in 1996*, University of Natal, Durban.

Hugo, H.A. 1998: Personal Interview, Umbumbulu

Huigen, P., (1995) : *Less Planning, More Vision!* Planning concepts and sustainability in Rural areas, The sustainability of Rural systems Bryant ,C.R. and Marois, C. (eds), University of Montreal.

Hurwitz, N., 1946 : *The Duin Community: A Rural Study 1946*, Natal College, Durban.

Khumalo. M. 1998: Personal Interview, Mid-Illovo

Kings, 1, 21:1-29, 1982: *The Holy Bible* in the New King James Version Copyright © 1982 by Thomas Nelson, Inc.

Kotze, H. and Basson, F., 1994 : *Development Southern Africa*, vol. 1 no.2.

Kweyama & Kweyama: 1998 Personal Interview, Umbumbulu

Land Update Editor, 1998 : *Land Update Publication* January /February.

LAPC, 1993 : *Land Redistribution Options* conference (12-15) October.

Lembede, M. 1998: Personal Interview, Umbumbulu

Lembede, M. 1998: Personal Interview, Pietermaritzburg

Lembede. M. 1998: Personal Interview, Amanzimtoti

Lenta, G. and Maasdorp, G., 1988 : *Limit Factors on Food Production in the Homelands*, in cross, C and Haines, R.(eds), *Towards Freehold: Options for Land and Development in South Africa's Black Rural Areas*,Juta, Cape Town.

Leslie, P. G., Guma, M. and Molten 1997 : *African Challenge to the Change in the 21st Century*, Cape Town.

Levin, R. and Weiner, D., 1994 : *Community Perspectives on Land and Agrarian Reforms in South Africa*, Report to MacArthur Foundation, Chicago, Illinois (USA).

Lier, H. N. (1996) : *Sustainable Rural Systems: From Land Use Planners Perspective*, Geographic Perspectives on Sustainable Rural Systems, Sasaki, H., Saito., Tabayashi, A. and Morimoto, T. (eds), Kaisei Publications, Tokyo.

Lund, S. and Wakelin., 1993 : *Administrative Requirements for Rural Restructuring: a summary of collected investigation and recommendations*, paper presented at the Land and Agriculture Policy Centre conference on Land redistribution and options, October 12-15, Johannesburg.

Mackenzie, D.J., 1980 : *Dube and the Land Issue 1913 - 1936*, University of Natal Durban.

Makhanya, E. M., 1979 : *Plight of the Rural Population in Lesotho*, Africa institute Pretoria.

Makhanya, E.M., 1994 : *Land use and Land cover in Kwazulu-Natal*, Report to the Land and Agriculture Policy Centre land reform research programme.

Marcus, T., Eales, K. & Wildschut, A., 1996 : *Down to Earth*, Indicator Press, University of Natal , Durban.

May, J., 1987 : *Differentiation and inequality in Bantustans: Evidence from KwaZulu*, University of Natal Development Studies Unit paper no. 7.

Mkhize, J. 1998: Personal Interview, KwaMakhutha Umbumbulu

Murray, M.J., 1989 : *The origins of agrarian capitalism in South Africa: a critique of*

the social history perspective, Journal of Southern African Studies, 15(4), 645-665

Myers, N. (ed), 1987 : *The Gaia Atlas of Planet Management*, Oxford University Press, Oxford.

Natras, J. 1981 : *The South African Economy. Its Growth and Change*, Oxford University Press, Oxford.

Natras & Natras, 1990: South Africa, the Homelands and Rural Development, *Development Southern Africa*, vol. 7, special edition, Halfway House.

Nellis M. D., (1996) : The sustainability of agricultural systems: *Geographic Perspectives on Sustainable Rural Systems*, Sasaki, H., Saito, I. Tabayashi, A. and Morimoto, T. (eds) Kaisei Publications, Tokyo.

Ntombela, V.1998: Personal Interview, Umbumbulu

Pierce, J.T., 1995 : Agricultural restructuring : options for change and adjustment, *The Sustainability of Rural Systems*, C. R. and Marois, C. (eds), University of Montreal, Montreal.

Platsky, L. & Walker, C. 1985 : *The Surplus People: Forced Removals in South Africa*, Johannesburg, Raven.

Raid, El. Chonemy 1991 : *The political Economy of rural Poverty*, Routledge, London and New York.

Runkin D., 1996 : *Rural Development within the contest of Land Reform, The Case of Deult Farm: The case of Deult Farm*: University of Natal, Durban.

Sanderson, S. R. 1994 : *Land Reform in Mexico*, Academic Press., Inc. New York.

Marks, S. 1970: *Reluctant Rebellion: the 1906-1908 Disturbances in Natal*, Oxford

South Africa (Republic of), 1991 : *White Paper on Land Reform (WP B-91)*, Government Printer, Pretoria.

South Africa 1994 : *Restitution of Land Right Act*, (Act 22 of 1994 G.G.161) 6. Government Printer, Pretoria

South Africa (Republic of), 1996 : *Green Paper on Land Reform*, Govern Printer, Pretoria.

South Africa (Republic of), 1997 : Department of Land Affairs: *White Paper on South African Land Policy*, Department of Land Affairs : Government Printer, Pretoria.

Surplus People Project, 1983 : *Surplus People Project - Natal*, Vol 4 Cape Town.

van Rooyen C.J., Vink, N. & Christoudoulou, N. T., 1987 : Access to the Agricultural Market for the Small Farmers in Southern Africa: Access to the agricultural market for the small farmers in Southern Africa: The Farmer Support Programme, *Development Southern Africa*, 4(2), 207-223.

Warriner, D., 1970 : *Employment and Income Aspect of Recent Agrarian Reforms in the Middle East*: International Labour Review.

Weiner, D. and Levin, R., (eds), 1991 : *Land and Agrarian Transition in South Africa*, Antipode

Weiner, D. and Moyo, S., Munslow, B. and O'keefe, P., 1985 : *Land use and Agricultural productivity in Zimbabwe*, Journal of Modern African Studies, 23(@), 251-28.

Welsh D. 1971 : *Roots of Segregation: Native Policy in Colonial Natal, 1845-1910*, Oxford univ.Press Cape Town.

Whitby, M. and Ollerenshaw, J., 1988 : *Land Use and the European Environment*, Belhaven Press London and New York.

World Bank, 1993 : *Options for Land Reform*, Presented at the Land and Agricultural Policy Centre conference on land redistribution October 12-15, Johannesburg.

Xulu, B.B. 1996 : *Land Restitution : The Case of Roosboom in Northern KwaZulu-Natal*, Southern and Eastern Africa Regional Conference on Experiences, Perspectives and Strategies on Land Reform and Land Rights in Rural and Urban Settings 26 - 28 June, 1996. Johannesburg.

Yugandhar, B. N., 1977 : *Land Reform in India*, Sage Publication, New Delhi.

UNIVERSITY OF ZULULAND

DEPARTMENT OF GEOGRAPHY

DURBAN - UMLAZI CAMPUS

Research Project Questionnaire - C.E. Bengu (1998)

for a PhD degree

1. QUESTIONNAIRE FORMAT

1.1 DECLARATION OF CONFIDENTIALITY

****** The questionnaire is designed as an endeavour to obtain the viewpoint of the people on the ground who have been affected directly by the dispossession of their land, their struggles, current problems and how these can be addressed for the improvement of their quality of life in New Democratic South Africa. Their view on the allocation and expansion of their arable land, the introduction of viable agriculture, government services, transport systems and communications etc that can remedy their situation now and for the future generations.

****** This questionnaire is purely for Research purposes. It is by no means a test or an examination, therefore, all answers are correct. The investigator appeals to you to give your views on the proper use of the resources at your disposal and also their use for the coming generations as well as to how to maintain the environment. He needs your perception of the situation. All information obtained will remain strictly confidential, and under no circumstance will it be used for any other purpose other than the one specified.

****** You may give answers in the order of importance

DATE :

year

month

day

--	--	--	--	--	--

Questionnaire no.

--	--	--

1.2 DEMOGRAPHIC INFORMATION

1.2.1 The status of respondent?

1. Status in the household	
2. Sex	
3. Age	

1.2.2 Marital Status?

1. Married	
2. Single	
3. Divorced	
4. Widowed	
5. More than one wife	

1.2.3 Residence of respondent? If not Mpangisa? where?

Where do you live?	Name of Place
How long have you been living here?
Where did you live before you came here?
Why did you choose to live here?	(i) Parents forced to move (ii) Forced to move here (iii) Joined relatives (iv) Fenced in by whites

What is your status in Mpangisa	1. Inkosi 2. headman 3. Induna 5. citizen 6. visitor
How many people live with you?	1 - 18 years 19 - 35 years 36 - 55 years 56 - above
How many children do you have?	0 - 18 years 19 - 35 years 36 - 55 years 56 - above
How many children are attending school?
How many children are at school going age but are not attending school?	below 12 years above 12 years
How many persons in the household are employed elsewhere?	Male	Female
How many persons in the household are employed locally?	Male	Female
What type of work is each person doing?	1. skilled 2. unskilled 3. semi-skilled 4. clerical 5. technical 6. administrative
How many persons are employed?	1. not applicable 2. 21 - 40 years 3. 41 - 59 years 4. 60 - above

1.2.5 Employment?

Are you employed?		
If No! What is the cause of the unemployment?	1. don't seek work 2. retrenched 3. can't find employment 4. ill 5. pensioners 6. other

1.2.6 Education?

What is the level of education of your family members?	1. never went to school 2. up to std 5 3. up to std 8 4. up to std 10 5. post matric qualification.
How many members of your family live away from home?	1. under 18 years 2. above 18 years

2. AGRICULTURAL PRODUCTION

2.1 Land Access and Use

2.1.1 Could you give the Information about the Land that your Household has Access to:

Type of land use	
1. Residential	
2. Grazing	
3. Agricultural	
5. None	

2.1.2 Who allocated you land?

1. Father	
2. Inherited	
3. Rented	
4. Purchased	
5. Who sold it (the Chief/headman)?	
5. Other (specify)	

2.1.3 What is the Average Size of your Fields?

1. Less than 2 ha	
2. 2 - 3 ha	
3. 3 - 4 ha	
4. 4 - 5 ha	
5. 5 + ha	

2.1.4 Have your parcels of land remained the same?

1. Yes	
2. No	
3. If No (Give reasons)	

2.1.5 Did you manage to cultivate all your fields?

1. Yes	
2. No	
3. If "NO" Why did you not cultivate all?	
4. Lie fallow.....	
5. Drought.....	
6. Crop rotation.....	
7. Other (specify)	

2.1.6 How is the Land Owned?

1. Communal land	
2. Private land	
3. Government land	

2.1.7 What is the reason for your crop failure?

1. Pests	
2. Poor soil	
3. Lack of rain	
4. Too much rain	
5. Hail storm	
6. Frost	
7. Other (specify)	

2.1.8 The Amount of Rainfal in this Area

1. Good	
2. Average	
3. Little	
4. Not sure	

2.1.9 What is the main source of your seeds?

1. Own seeds	
2. Neighbours	
3. Merchants	
4. Other (specify)	

2.1.10 Do you Sell Produce?

1. Seldom	
2. Often	
3. Never	
4. Other (specify)	

2.1.11 Tick Types of Crops/Vegetable Cultivated

1. Maize	
2. Beans	
3. Tomatoes	
4. Cabbage	
5. Potatoes	
6. Sweet Potatoes	
7. Pumpkins	
8. Ground Nuts	
9. Amadumbe	
10. Peanuts	

2.1.12 Tick Type of Fruit Grown

1. Sub-tropical fruit (Bananas, Mangoes, etc)	
2. Tropical fruit (Peaches, Apples, etc)	
3. Citrus fruit (Oranges, Lemons, etc)	

2.1.13 What Type of Fertilisers do you use?

1. Traditional Fertiliser e.g. Kraal manure	
2. Commercial Fertiliser.....	
3. Other	

2.1.14 Are Herbicides(chemicals for killing the weeds) Used?

1. Yes	
2. No	
3. sometimes	

2.1.15 Do you lose soil due to erosion?

1. Not at all	
2. Occasionally	
3. Continually	
4. Do not know	
5. Other (specify)	

2.1.16 Do you know of people who abandoned their fields because of soil erosion in these areas?

1. Nobody	
2. A few	
3. Many	
4. Not sure	

2.1.17 Which of the following measures are effective for the control of soil erosion?

1. Grass strips	
2. Terraces	
3. Dams	
4. Grassed water ways	
5. Grazing control	
6. diversiton furrows	
7. Planting of trees	
8. Crop rotation	
9. Other (specify).....	

2.1.18 List in Order of Priority Problems Affecting Productivity

1. Land is dry and barren	
2. Shortage of water.....	
3. Shortage of land/over crowding	
4. Lack of modern skills.....	
5. Lack of capital (money)	
6. Lack of market	
7. Transportation	

2.1.19 Do Children and Women Work on White Farms?

1. Children		
2. Women		
3. Both		

2.1.20 Do Farm Workers have Trade Unions?

1. Yes	
2. No	
3. Don't know	

2.1.21 Do Farmers still Evict Farm Labourers?

1. Yes	
2. No	
3. Don't know	

2.1.22 Estimated Average Income of Farm labourers per/m

1. R100 - R199	
2. R200 - R299	
3. R300 - R399	
4. R400 - R499	
5. R55 and Above	

2.1.23 Any Privileges Enjoyed by Farm Workers?

1. Medical Aid	
2. Bonus	
3. Sick leave	
4. Overtime pay	
5. Permanant employment	
6. Other (specify)	
.....	

2.1.24 Do you Own, Hire or Borrow these Items for Ploughing your Fields?

CAPITAL ASSETS	OWN	HIRE	BORROW
1. Rake			
2. Shovel/Spade			
3. Ox-drawn wooden plough			
4. Ox-drawn metal plough			
5. Tractor			
6. Water tank			
7. Hand hoe			
8. Other (specify)			

2.1.25 Do you Know your Extension Officers?

1. Yes	
2. No if "No" Why?	
.....	
3. Not sure	

2.1.26 Does an Agricultural Extension Workers ever Visit your Community

1. Yes	
2. No	
3. I don't know	

2.1.27 How Should Agricultural Land be Allocated?

1. By Chiefs	
2. By Provincial Government	
3. By locally elected Committes	
4. By Purchase	
5. Other (specify).....	

2.1.28 How do People Acquire Land from Chiefs?

1. Pay cash	
2. Pay in labour	
3. Pay in kind	
4. Pay token	
5. Other (specify)	

2.1.29 If Pay in Cash, How Much for a Site?

1. R 50 - R100	
2. R110 - R200	
3. R210 - R300	
4. R310 - R400	
5. R410 - R500	
6. R510 and Above	

2.1.30 Do you Consider Tribal Struggles in Rural Farming as Worsening in the New South Africa?

1. Yes	
2. If "Yes" Why?	
3. No	
4. If "No" Give your reasons	
3. Other (specify)	

2.1.31 Are the Values of Free Political Activities Possible in these Rural Areas?

1. Yes	
2. No	
3. Not sure	

3. FARMING SYSTEMS

3.1 Do you Own any Livestock?

1. Yes	
2. No	

3.2 What Type of Livestock do you Keep?

The Number You Own	Less than 5	06-10	11-30	40-50	51 and above
1. Cattle					
2. Sheep					
3. Goats					
4. Pigs					
5. Poultry					
6. Donkeys					
7. Other					

3.3 Do you Sell your Livestock?

1. Yes	
2. If "Yes" how often (a) frequently (b) sometimes..... (c) not sure
3. No	

3.4 To Whom do you Normally Sell your Livestock?

1. Stock farmers	
2. Meat producers	
3. Friends/Neighbours	
4. Other (specify)	

3.5 What was your Highest Selling Price?

1. R 200 - 300	
2. R400 - 500	
3. R600 - 700	
4. R800 - 900	
5. R1 000 and Above	

3.6 How Often do Agricultural Extension Agents Visit the Community?
Please Tick one

1. Every day	
2. Once a week	
3. Once a month	
4. Once a season	
5. Not at all	
6. Other (specify)	

3.7 Tick the Box which Expresses the General Usefulness of the Extension Agent Visits to the Community

1. Very useful	
2. Somewhat useful	
3. Not useful	

4. SOCIO-ECONOMIC INFRASTRUCTURE

4.1 Are rural people are granted agricultural loans by the lending institutions?

1. Yes	
2. No	
3. Do not know	

5. SOCIO-ECONOMIC INFRASTRUCTURE

5.1 Does this Household have any of the Following?

1. Television	
2. Electricity	
3. Radio	

5.2 What is the Primary Source of Water for this Household?

1. Stream/River	
2. Well	
3. Spring	
4. Private tap	
5. Community tap	
6. Dam	
7. Other sources (specify)	

5.3 If no Private Tap, What is the Distance from home?

1. Less than 10 metres	
2. 100 metres - 1 kilometres	
3. 1 - 2 kilometres	
4. More than 3 kilometres	

5.4 What are your Primary Sources of Fuel for this Household?

Fuel sources	Cooking	Lighting	Heating
1. Wood			
2. Paraffin			
3. Coal			
4. Gas			
5. Electricity			
6. Generator			
7. Cow dung			
8. Candles			
9. Other			

5.5 What are Sources of your Income?

1. Pension	
2. Farming	
3. Industry	
4. Public Service	
5. Mining	
6. Informal Sector	
7. Business	
8. Other (specify)	

5.6 If your Primary source is Wood, what is the Distance from the Points of Collection (average)?

1. Less than 100 metres	
2. 100m - 1 kilometre	
3. 1 - 2 kilometres	
4. More than 3 kilometres	

5.7 How much do you Spend per Month (in Rands)?

Household Expenditure	200-299	300-399	400-499	500 & >
1. Food				
2. School fees				
3. Uniform				
4. Transport				
5. Provision				
6. Other				
TOTAL EXPENDITURE				

5.8 How do you Pay for these Items?

Item	Cash	Credit	Selling of livestock
1. Food			
2. Clothes			
3. Furniture			
4. Transport			
5. School Fees			
6. Medical care			
7. Hardware			

5.9 List Major Problems of this Area according to priority

1. Starvation	
2. Unemployment	
3. Lack of a Transport	
4. Lack of Health Services	
5. Shortage of Schools	
6. Over population	
7. Other (specify)	
.....	

5.10 Which Institutions are Available?

1. Creches	
2. Pre-primary schools	
3. High schools	
4. Other (specify)	

5.11 Any Assistance from Formal Lending Institutions?

1. Yes	
2. No	
3. If "No" access to credit, Why?	
.....	
.....	

Thank you very much for your assistance.